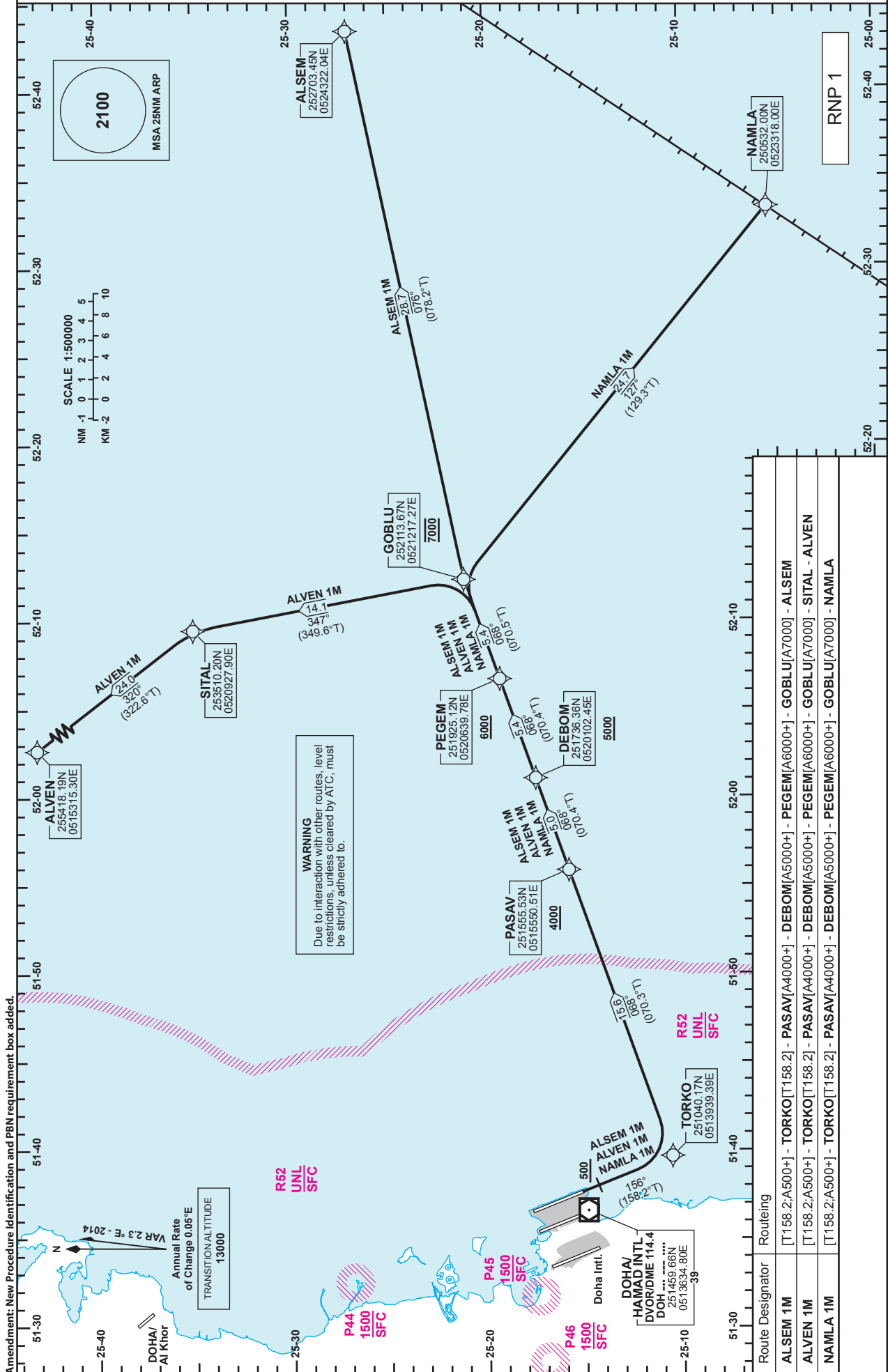


**STANDARD DEPARTURE
CHART - INSTRUMENT
(SID) - ICAO**

DIST IN NM
BEARINGS ARE MAGNETIC
ALTITUDES AND ELEV IN FEET

DOHA RADAR	121.10
DOHA APP	119.725 / 120.60
TWR (EAST)	118.525 / 118.225
TWR (WEST)	118.025 / 118.225

**DOHA/Hamad Intl. (OTHH)
RNP RWY 16L
ALSEM 1M /ALVEN 1M /NAMLA 1M**



Standard Instrument Departure Coding Table

→ HAMAD INTERNATIONAL RNP Standard Instrument Departure ALSEM 1M, ALVEN 1M, NAMLA 1M

→ OTHH RNP SID ALSEM 1M

Serial Num	PT	WPT	Flyover	Course(T)	Magnetic Variation	Dist(NM)	Turn Direction	Altitude Description	Speed Limit	THR Elev TCH (ft)	VPA (°)	Arc Center Wpt Ident/radius (NM)	Navigational Performance
1	CA	-	-	156 (158.2)	2.3	-		+500					RNP1.0
2	CF	TORKO	-	156 (158.2)	2.3	-		-					RNP1.0
3	TF	PASAV	-	068 (070.3)	2.3	15.6		+4000					RNP1.0
4	TF	DEBOM	-	068 (070.4)	2.3	5.0		+5000					RNP1.0
5	TF	PEGEM	-	068 (070.4)	2.3	5.4		+6000					RNP1.0
6	TF	GOBLU	-	068 (070.5)	2.3	5.4		@7000					RNP1.0
7	TF	ALSEM	-	076 (078.2)	2.3	28.7		-					RNP1.0

→ OTHH RNP SID ALVEN 1M

Serial Num	PT	WPT	Flyover	Course(T)	Magnetic Variation	Dist(NM)	Turn Direction	Altitude Description	Speed Limit	THR Elev TCH (ft)	VPA (°)	Arc Center Wpt Ident/radius (NM)	Navigational Performance
1	CA	-	-	156 (158.2)	2.3	-		+500					RNP1.0
2	CF	TORKO	-	156 (158.2)	2.3	-		-					RNP1.0
3	TF	PASAV	-	068 (070.3)	2.3	15.6		+4000					RNP1.0
4	TF	DEBOM	-	068 (070.4)	2.3	5.0		+5000					RNP1.0
5	TF	PEGEM	-	068 (070.4)	2.3	5.4		+6000					RNP1.0
6	TF	GOBLU	-	068 (070.5)	2.3	5.4		@7000					RNP1.0
7	TF	SITAL	-	347 (349.6)	2.3	14.1		-					RNP1.0
8	TF	ALVEN	-	320 (322.6)	2.3	24.0		-					RNP1.0

→ OTHH RNP SID NAMLA 1M

Serial Num	PT	WPT	Flyover	Course(T)	Magnetic Variation	Dist(NM)	Turn Direction	Altitude Description	Speed Limit	THR Elev TCH (ft)	VPA (°)	Arc Center Wpt Ident/radius (NM)	Navigational Performance
1	CA	-	-	156 (158.2)	2.3	-		+500					RNP1.0
2	CF	TORKO	-	156 (158.2)	2.3	-		-					RNP1.0
3	TF	PASAV	-	068 (070.3)	2.3	15.6		+4000					RNP1.0
4	TF	DEBOM	-	068 (070.4)	2.3	5.0		+5000					RNP1.0
5	TF	PEGEM	-	068 (070.4)	2.3	5.4		+6000					RNP1.0
6	TF	GOBLU	-	068 (070.5)	2.3	5.4		@7000					RNP1.0
7	TF	NAMLA	-	127 (129.3)	2.3	24.7		-					RNP1.0