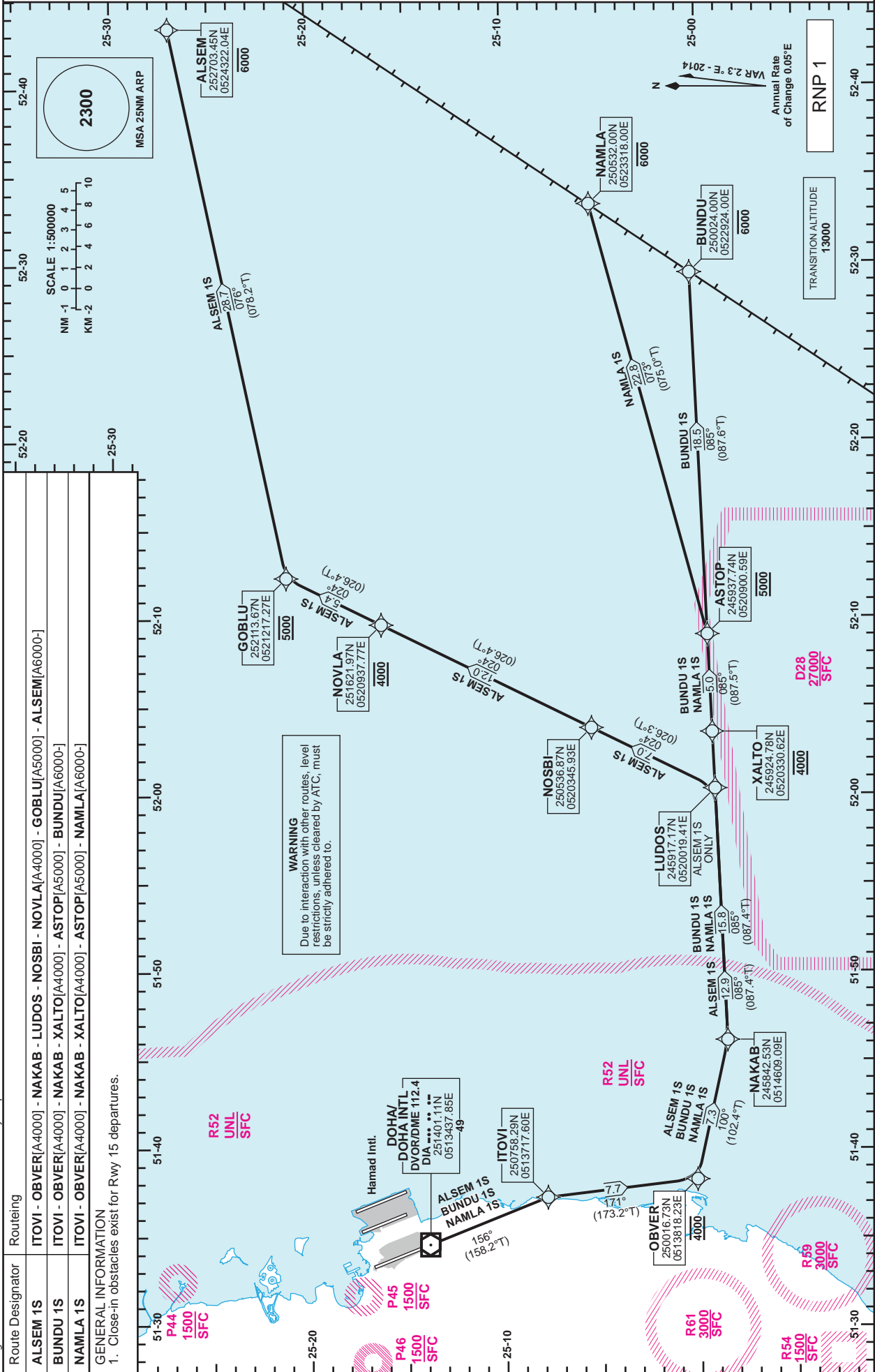


**STANDARD DEPARTURE
CHART - INSTRUMENT
(SID) - ICAO**

DIST IN NM
BEARINGS ARE MAGNETIC
ALTITUDES AND ELEV IN FEET

DOHA RADAR 121.10
DOHA APP 119.725 / 120.60
TWR 118.90 / 119.025

**DOHA/Doha Intl. (OTBD)
RNP RWY 15
ALSEM 1S /BUNDU 1S /NAMLA 1S**



Changes: New restricted area R61. New TWR secondary freq.

STANDARD DEPARTURE
CHART - INSTRUMENT
(SID) - ICAO

DOHA/Doha Intl.(OTBD)
RNP RWY 15
ALSEM 1S /BUNDU 1S / NAMLA 1S

TABULAR DESCRIPTION

RNP SID ALSEM 1S

Serial Num	Path Descriptor	Waypoint Identifier	Fly-over	Course °M(°T)	Magnetic Variation(°)	Distance (NM)	Turn Direction	Altitude (ft)	Speed (kt)	VPA(°)/TCH(ft)	Navigation Specification
1	CF	ITОВI	-	156 (158.2)	2.3	-	-	-	-	-	RNP 1
2	TF	OBVER	-	171 (173.2)	2.3	7.7	-	@4000	-	-	RNP 1
3	TF	NAKAB	-	100 (102.4)	2.3	7.3	-	-	-	-	RNP 1
4	TF	LUDOS	-	085 (087.4)	2.3	12.9	-	-	-	-	RNP 1
5	TF	NOSBI	-	024 (026.3)	2.3	7.0	-	-	-	-	RNP 1
6	TF	NOVLA	-	024 (026.4)	2.3	12.0	-	@4000	-	-	RNP 1
7	TF	GOBLU	-	024 (026.4)	2.3	5.4	-	@5000	-	-	RNP 1
8	TF	ALSEM	-	076 (078.2)	2.3	28.7	-	-6000	-	-	RNP 1

RNP SID BUNDU 1S

Serial Num	Path Descriptor	Waypoint Identifier	Fly-over	Course °M(°T)	Magnetic Variation(°)	Distance (NM)	Turn Direction	Altitude (ft)	Speed (kt)	VPA(°)/TCH(ft)	Navigation Specification
1	CF	ITОВI	-	156 (158.2)	2.3	-	-	-	-	-	RNP 1
2	TF	OBVER	-	171 (173.2)	2.3	7.7	-	@4000	-	-	RNP 1
3	TF	NAKAB	-	100 (102.4)	2.3	7.3	-	-	-	-	RNP 1
4	TF	XALTO	-	085 (087.4)	2.3	15.8	-	@4000	-	-	RNP 1
5	TF	ASTOP	-	085 (087.5)	2.3	5.0	-	@5000	-	-	RNP 1
6	TF	BUNDU	-	085 (087.6)	2.3	18.5	-	-6000	-	-	RNP 1

RNP SID NAMLA 1S

Serial Num	Path Descriptor	Waypoint Identifier	Fly-over	Course °M(°T)	Magnetic Variation(°)	Distance (NM)	Turn Direction	Altitude (ft)	Speed (kt)	VPA(°)/TCH(ft)	Navigation Specification
1	CF	ITОВI	-	156 (158.2)	2.3	-	-	-	-	-	RNP 1
2	TF	OBVER	-	171 (173.2)	2.3	7.7	-	@4000	-	-	RNP 1
3	TF	NAKAB	-	100 (102.4)	2.3	7.3	-	-	-	-	RNP 1
4	TF	XALTO	-	085 (087.4)	2.3	15.8	-	@4000	-	-	RNP 1
5	TF	ASTOP	-	085 (087.5)	2.3	5.0	-	@5000	-	-	RNP 1
6	TF	NAMLA	-	073 (075.0)	2.3	22.8	-	-6000	-	-	RNP 1

WAYPOINT LIST

RNP SID ALSEM 1S/BUNDU 1S/NAMLA 1S

Waypoint Identifier	Coordinates
ITОВI	250758.29N 0513717.60E
OBVER	250016.73N 0513818.23E
NAKAB	245842.53N 0514609.09E
LUDOS	245917.17N 0520019.41E
NOSBI	250536.87N 0520345.93E
NOVLA	251621.97N 0520937.77E
GOBLU	252113.67N 0521217.27E
ALSEM	252703.45N 0524322.04E
XALTO	245924.78N 0520330.62E
ASTOP	245937.74N 0520900.59E
BUNDU	250024.00N 0522924.00E
NAMLA	250532.00N 0523318.00E