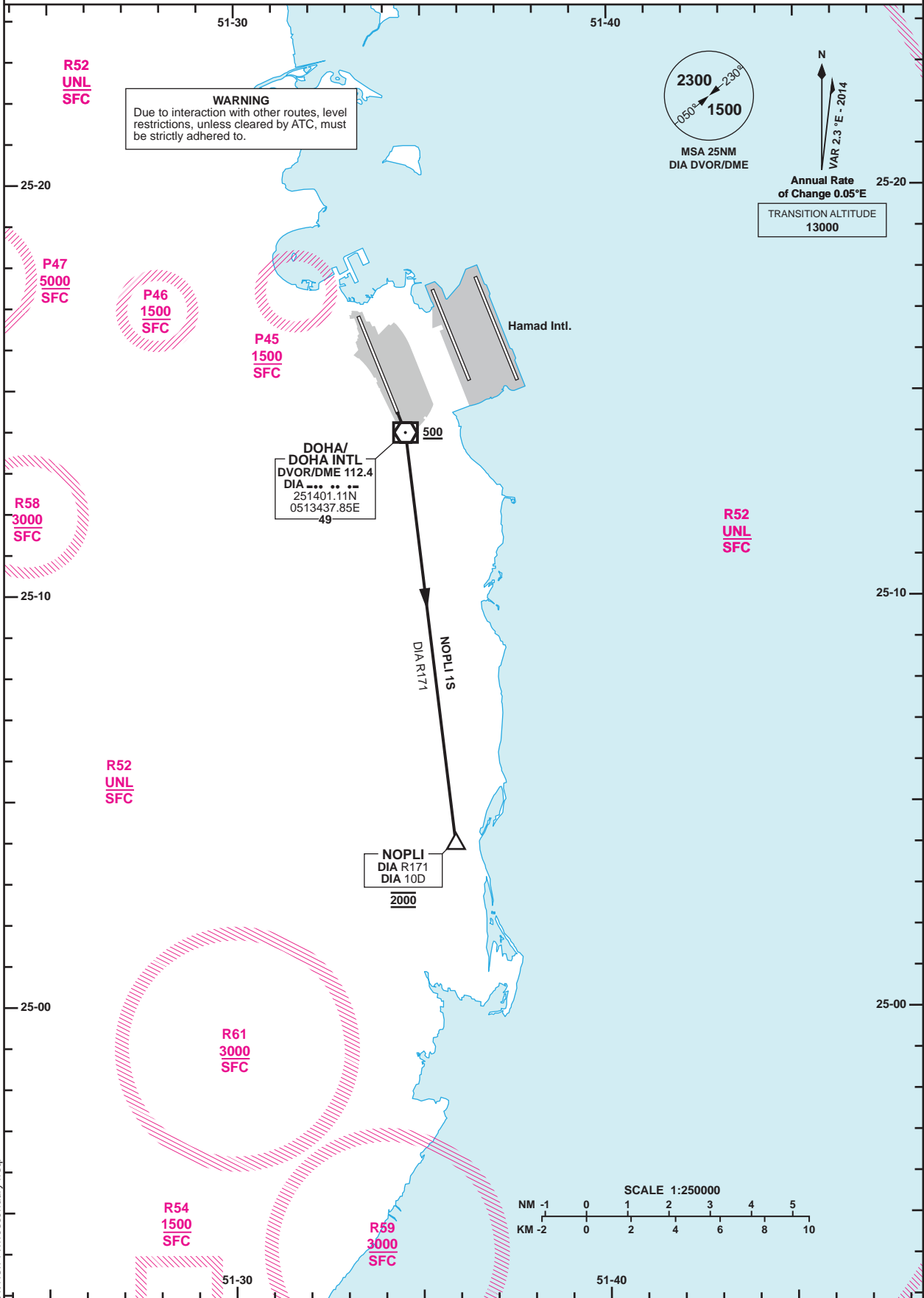


**STANDARD DEPARTURE
CHART - INSTRUMENT
(SID) - ICAO**

DIST IN NM
BEARINGS ARE MAGNETIC
ALTITUDES AND ELEV IN FEET

DOHA RADAR 121.10
DOHA APP 119.725 / 120.60
TWR 118.90 / 119.025

**DOHA/Doha Intl. (OTBD)
RWY 15
NOPLI 1S**



Route Designator	Routeing			
NOPLI 1S	Climb straight ahead to 500 . Turn right to intercept DIA R171 to NOPLI (DIA10D) at 2000 . Continue as directed.			
GENERAL INFORMATION : 1. Close-in obstacles exist.				
RWY	Primary SIDs	Initial Contact	Initial Altitude	Radio Fail Procedures
15	NOPLI 1S	DEPs	2000	Execute three right-hand orbits at NOPLI at 2000. Continue right-hand orbit climbing to 5000. Proceed direct to first enroute waypoint then continue as flight planned or proceed direct to DIA DVOR and follow the ILS 15 approach procedure to land at OTBD.

Changes: New restricted area R61. New TWR secondary freq.