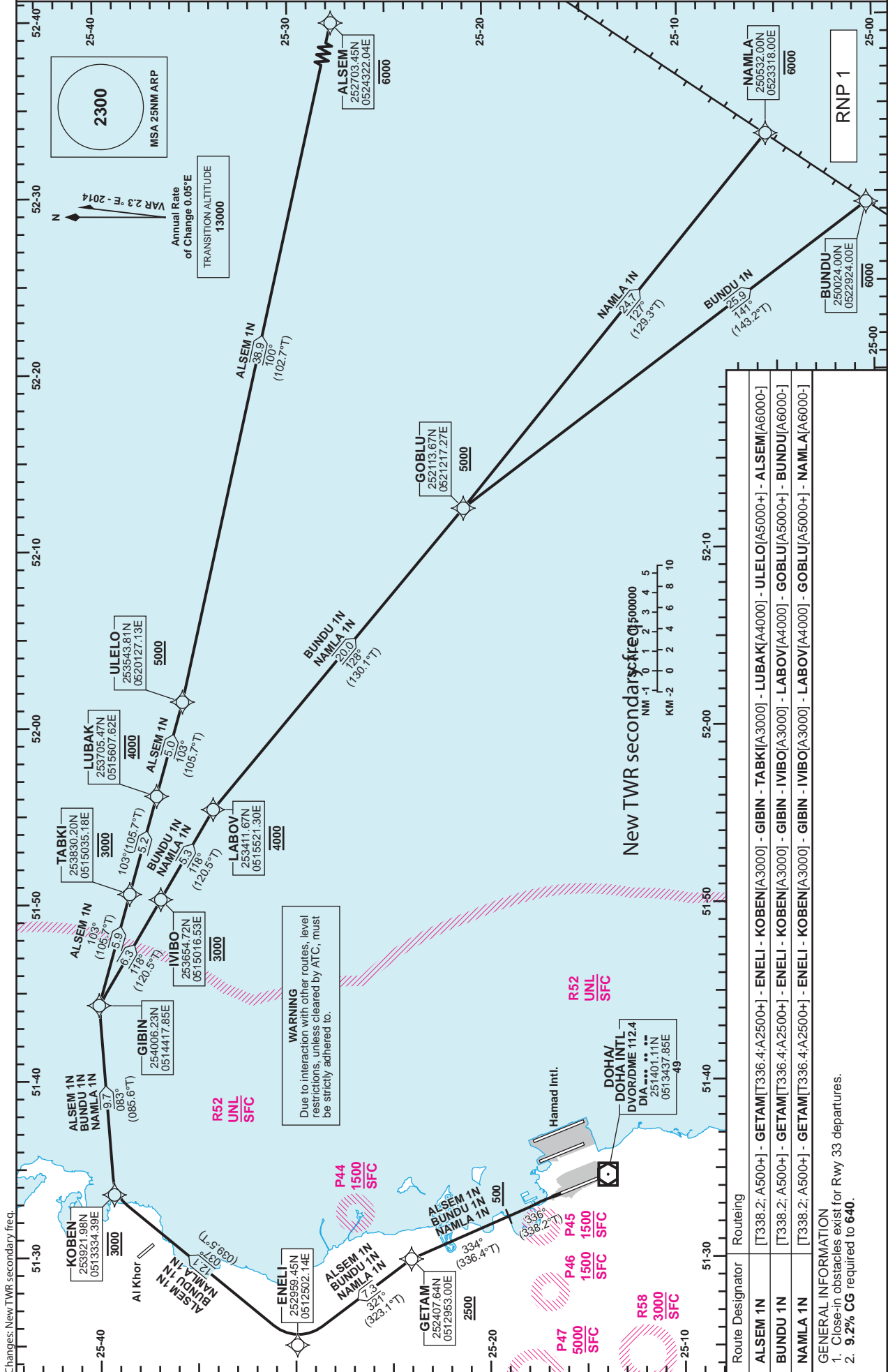


**STANDARD DEPARTURE  
CHART - INSTRUMENT  
(SID) - ICAO**

DIST IN NM  
BEARINGS ARE MAGNETIC  
ALTITUDES AND ELEV IN FEET

DOHA RADAR 121.10  
DOHA APP 119.725 / 120.60  
TWR 118.90 / 119.025

**DOHA/Doha Intl. (OTBD)  
RNP RWY 33  
ALSEM 1N / BUNDU 1N / NAMLA 1N**



Route Designator	Routing
ALSEM 1N	[T338.2; A5000+] - GETAM [T336.4; A2500+] - ENELI - KOBEN [A3000] - GIBIN - TABKI [A3000] - LUBAK [A4000] - ULELO [A5000+] - ALSEM [A6000+]
BUNDU 1N	[T338.2; A5000+] - GETAM [T336.4; A2500+] - ENELI - KOBEN [A3000] - GIBIN - IVIBO [A3000] - LABOV [A4000] - GOBLU [A5000+] - BUNDU [A6000+]
NAMLA 1N	[T338.2; A5000+] - GETAM [T336.4; A2500+] - ENELI - KOBEN [A3000] - GIBIN - IVIBO [A3000] - LABOV [A4000] - GOBLU [A5000+] - NAMLA [A6000+]

**GENERAL INFORMATION**  
1. Close-in obstacles exist for Rwy 33 departures.  
2. 9.2% CG required to 640.

Changes: New TWR secondary freq.

STANDARD DEPARTURE  
CHART - INSTRUMENT  
(SID) - ICAO

DOHA/Doha Intl.(OTBD)  
RNP RWY 33  
ALSEM 1N /BUNDU 1N /NAMLA 1N

TABULAR DESCRIPTION

RNP SID ALSEM 1N											
Serial Num	Path Descriptor	Waypoint Identifier	Fly-over	Course °M(°T)	Magnetic Variation(°)	Distance (NM)	Turn Direction	Altitude (ft)	Speed (kt)	VPA(°)/TCH(ft)	Navigation Specification
1	CA	-	-	336 (338.2)	2.3	-	-	+500	-	-	RNP 1
2	CF	GETAM	-	334 (336.4)	2.3	-	-	+2500	-	-	RNP 1
3	TF	ENELI	-	321 (323.1)	2.3	7.3	-	-	-	-	RNP 1
4	TF	KOBEN	-	037 (039.5)	2.3	12.1	-	@3000	-	-	RNP 1
5	TF	GIBIN	-	083 (085.6)	2.3	9.7	-	-	-	-	RNP 1
6	TF	TABKI	-	103 (105.7)	2.3	5.9	-	@3000	-	-	RNP 1
7	TF	LUBAK	-	103 (105.7)	2.3	5.2	-	@4000	-	-	RNP 1
8	TF	ULELO	-	103 (105.7)	2.3	5.0	-	+5000	-	-	RNP 1
9	TF	ALSEM	-	100 (102.7)	2.3	38.9	-	-6000	-	-	RNP 1

RNP SID BUNDU 1N											
Serial Num	Path Descriptor	Waypoint Identifier	Fly-over	Course °M(°T)	Magnetic Variation(°)	Distance (NM)	Turn Direction	Altitude (ft)	Speed (kt)	VPA(°)/TCH(ft)	Navigation Specification
1	CA	-	-	336 (338.2)	2.3	-	-	+500	-	-	RNP 1
2	CF	GETAM	-	334 (336.4)	2.3	-	-	+2500	-	-	RNP 1
3	TF	ENELI	-	321 (323.1)	2.3	7.3	-	-	-	-	RNP 1
4	TF	KOBEN	-	037 (039.5)	2.3	12.1	-	@3000	-	-	RNP 1
5	TF	GIBIN	-	083 (085.6)	2.3	9.7	-	-	-	-	RNP 1
6	TF	IVIBO	-	118 (120.5)	2.3	6.3	-	@3000	-	-	RNP 1
7	TF	LABOV	-	118 (120.5)	2.3	5.3	-	@4000	-	-	RNP 1
8	TF	GOBLU	-	128 (130.1)	2.3	20.0	-	+5000	-	-	RNP 1
9	TF	BUNDU	-	141 (143.2)	2.3	25.9	-	-6000	-	-	RNP 1

RNP SID NAMLA 1N											
Serial Num	Path Descriptor	Waypoint Identifier	Fly-over	Course °M(°T)	Magnetic Variation(°)	Distance (NM)	Turn Direction	Altitude (ft)	Speed (kt)	VPA(°)/TCH(ft)	Navigation Specification
1	CA	-	-	336 (338.2)	2.3	-	-	+500	-	-	RNP 1
2	CF	GETAM	-	334 (336.4)	2.3	-	-	+2500	-	-	RNP 1
3	TF	ENELI	-	321 (323.1)	2.3	7.3	-	-	-	-	RNP 1
4	TF	KOBEN	-	037 (039.5)	2.3	12.1	-	@3000	-	-	RNP 1
5	TF	GIBIN	-	083 (085.6)	2.3	9.7	-	-	-	-	RNP 1
6	TF	IVIBO	-	118 (120.5)	2.3	6.3	-	@3000	-	-	RNP 1
7	TF	LABOV	-	118 (120.5)	2.3	5.3	-	@4000	-	-	RNP 1
8	TF	GOBLU	-	128 (130.1)	2.3	20.0	-	+5000	-	-	RNP 1
9	TF	NAMLA	-	127 (129.3)	2.3	24.7	-	-6000	-	-	RNP 1

WAYPOINT LIST

RNP SID ALSEM 1N/BUNDU 1N/NAMLA 1N	
Waypoint Identifier	Coordinates
GETAM	252407.64N 0512953.00E
ENELI	252959.45N 0512502.14E
KOBEN	253921.98N 0513334.39E
GIBIN	254006.23N 0514417.85E
TABKI	253830.20N 0515035.18E
LUBAK	253705.47N 0515607.62E
ULELO	253543.81N 0520127.13E

RNP SID ALSEM 1N/BUNDU 1N/NAMLA 1N	
Waypoint Identifier	Coordinates
ALSEM	252703.45N 0524322.04E
IVIBO	253654.72N 0515016.53E
LABOV	253411.67N 0515521.30E
GOBLU	252113.67N 0521217.27E
BUNDU	250024.00N 0522924.00E
NAMLA	250532.00N 0523318.00E