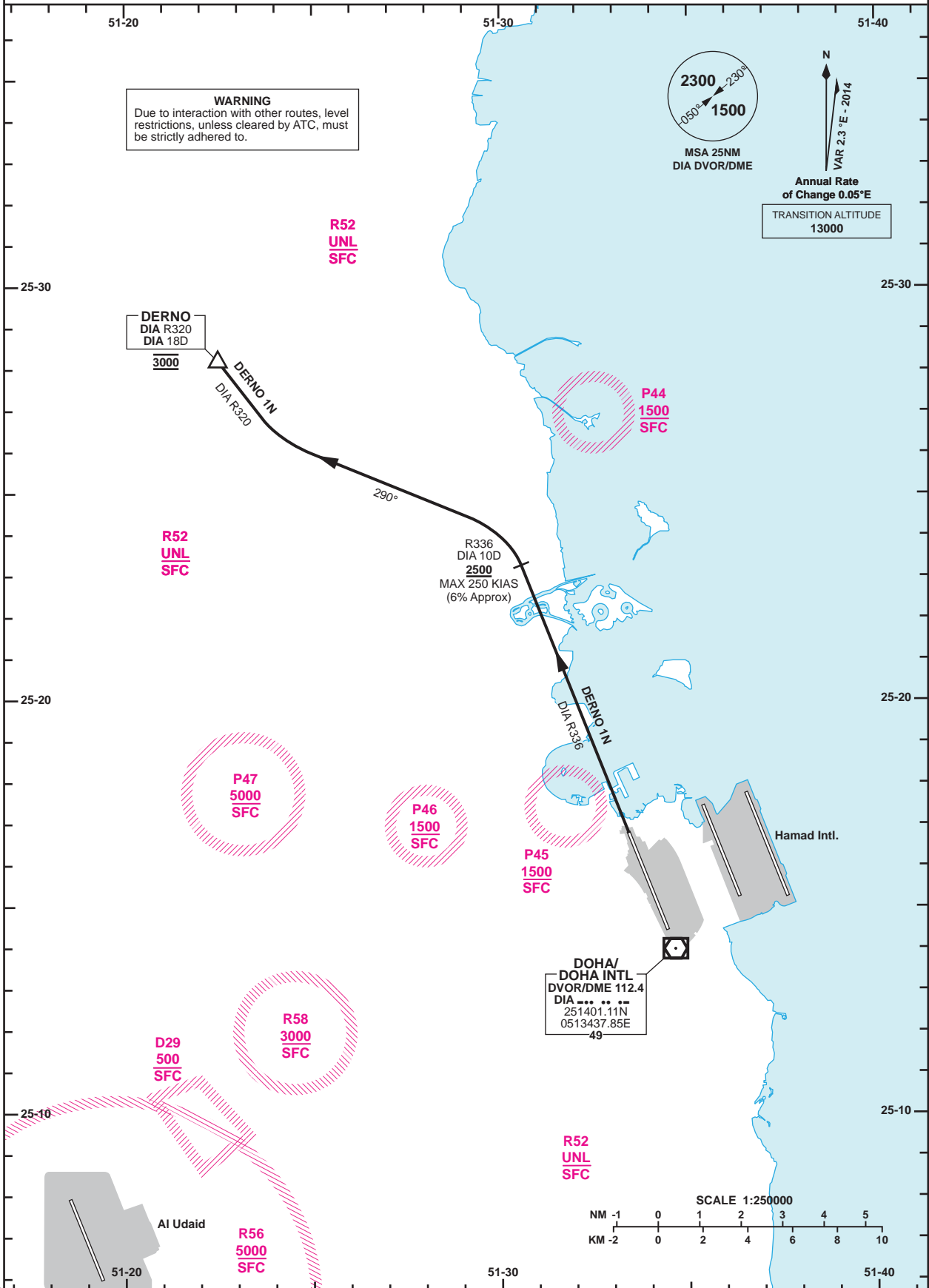


**STANDARD DEPARTURE
CHART - INSTRUMENT
(SID) - ICAO**

DIST IN NM
BEARINGS ARE MAGNETIC
ALTITUDES AND ELEV IN FEET

DOHA RADAR 121.10
DOHA APP 119.725 / 120.60
TWR 118.90 / 119.025

**DOHA/Doha Intl. (OTBD)
RWY 33
DERNO 1N**



Route Designator	Routeing
DERNO 1N	Climb on DIA R336 to DIA 10D , crossing DIA 10D at or above 2500 . Turn left heading 290° to intercept DIA R320 to DERNO (DIA 18D) at 3000 . Continue as directed.

GENERAL INFORMATION : 1. Close-in obstacles exist. 2. **9.0% CG** required to **1000**.

RWY	Primary SIDs	Initial Contact	Initial Altitude	Radio Fail Procedures
33	DERNO 1N	DEPs	3000	Execute three left-hand orbits at DERNO at 3000. Continue left-hand orbit climbing to 5000. Proceed direct to first enroute waypoint then continue as flight planned or proceed direct to DIA DVOR and follow the ILS 33 approach procedure to land at OTBD.

Changes: New TWR secondary freq.