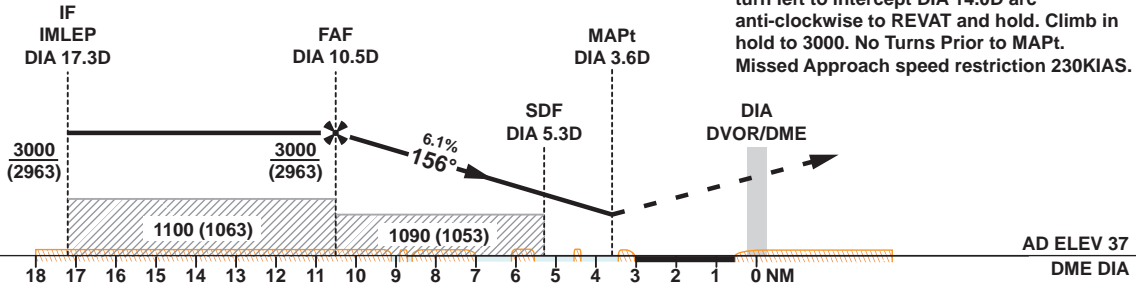


Missed Approach
Climb straight ahead to DIA, turn right onto R186 climbing to 2000. At DIA 12.0D, turn left to intercept DIA 14.0D arc anti-clockwise to REVAT and hold. Climb in hold to 3000. No Turns Prior to MAPt.
Missed Approach speed restriction 230KIAS.



OCA (OCH)		A	B	C	D	E
Straight in Approach	DVOR/DME	540 (503)				
	Circling	620 (583)	850 (813)	1240 (1203)		1550 (1513)

1. Hold at REVAT protected for Sector 3 Entry only.		VOR Approach: MAPt at DIA 3.6D							
2. Racetrack to be used only in case of communications failure.		Speed	KT	80	100	120	140	160	180
3. Aircraft to commence Initial Racetrack at 3000 (2963).		Time	MIN:SEC	Timing Not Authorized					
		RATE OF DESCENT	FT/MIN	490	610	740	860	990	1110

Changes: Updated MSA, dominating obstacle height and Circling Minimas.