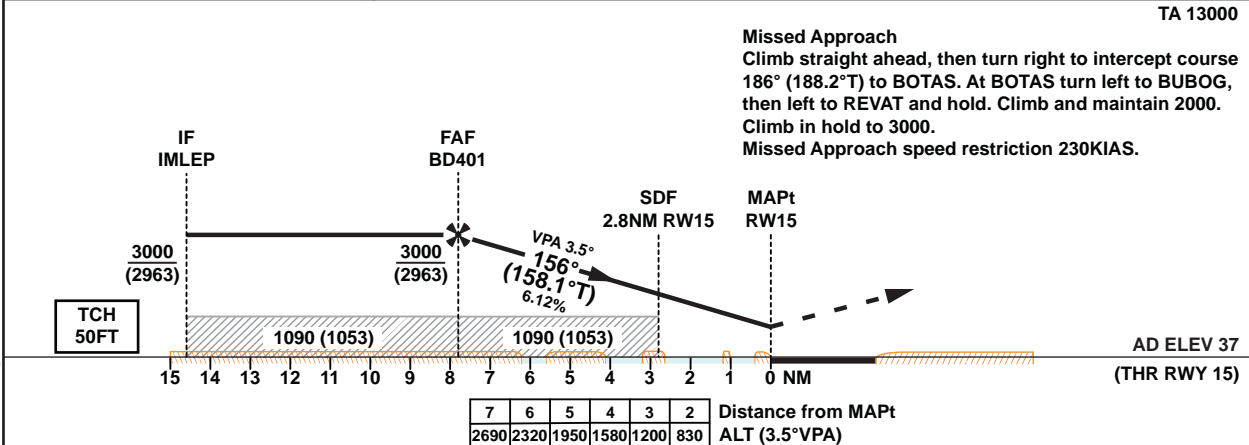
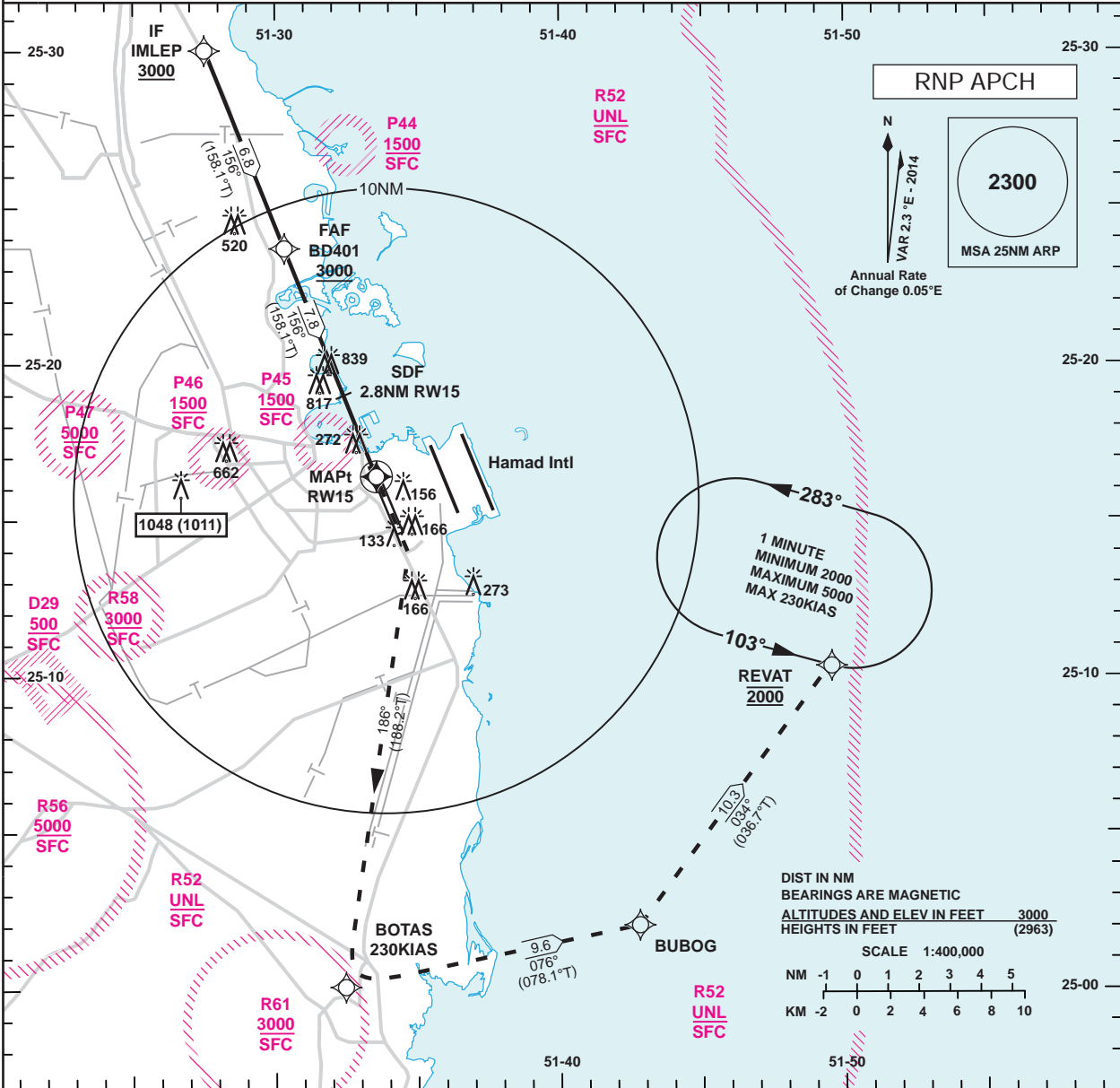


INSTRUMENT APPROACH CHART - ICAO **AD ELEV 37 HEIGHTS RELATED TO AD ELEV** **DOHA RADAR 121.10**
DOHA APP 119.725 / 120.60
DIRECTOR 119.40 / 121.125
TWR 118.90 / 119.025 **DOHA/Doha Intl. (OTBD)**
RNP RWY 15 (LNAV only)
ALL ACFT CATEGORIES



Missed Approach
 Climb straight ahead, then turn right to intercept course 186° (188.2°T) to BOTAS. At BOTAS turn left to BUBOG, then left to REVAT and hold. Climb and maintain 2000. Climb in hold to 3000.
 Missed Approach speed restriction 230KIAS.

OCA (OCH)		A	B	C	D	E
Straight in Approach	LNAV	520 (483)				
	Circling	620 (583)	850 (813)	1240 (1203)		1550 (1513)
1. Hold at REVAT protected for Sector 3 Entry only.						
Approach: MAPt at RW15						
Speed	KT	80	100	120	140	160 180
Time	MIN:SEC	Timing Not Authorized				
RATE OF DESCENT	FT/MIN	490	610	740	860	990 1110

Changes: Updated dominating obstacle height and Circling Minimas.

INSTRUMENT
APPROACH
CHART-ICAO

AD ELEV 37
HEIGHTS RELATED TO AD ELEV

DOHA/Doha Intl.(OTBD)
RNP RWY 15 (LNAV only)
ALL ACFT CATEGORIES

TABULAR DESCRIPTION

RNP RWY 15 (LNAV Only)

Serial Num	Path Descriptor	Waypoint Identifier	Fly-over	Course °M(°T)	Magnetic Variation(°)	Distance (NM)	Turn Direction	Altitude (ft)	Speed (kt)	VPA(°)/TCH(ft)	Navigation Specification
1	IF	IMLEP	-	-	2.3	-	-	+3000	-	-	RNP APCH
2	TF	BD401	-	156 (158.1)	2.3	6.8	-	+3000	-	-	RNP APCH
3	TF	RW15	Y	156 (158.1)	2.3	7.8	-	-	-	-3.5/50	RNP APCH
4	CF	BOTAS	-	186 (188.2)	2.3	-	L	-	-230	-	RNP APCH
5	TF	BUBOG	-	076 (078.1)	2.3	9.6	-	-	-230	-	RNP APCH
6	TF	REVAT	-	034 (036.7)	2.3	10.3	-	@2000	-230	-	RNP APCH
7	HM	REVAT	Y	103 (105.2)	2.3	4.3	L	@3000	-230	-	RNP APCH

WAYPOINT LIST

RNP RWY 15 (LNAV Only)

Waypoint Identifier	Coordinates
IMLEP	253003.10N 0512732.91E
BD401	252344.28N 0513020.49E
RW15	251626.13N 0513333.92E
BOTAS	250006.66N 0513226.55E
BUBOG	250204.78N 0514245.93E
REVAT	251020.75N 0514932.10E