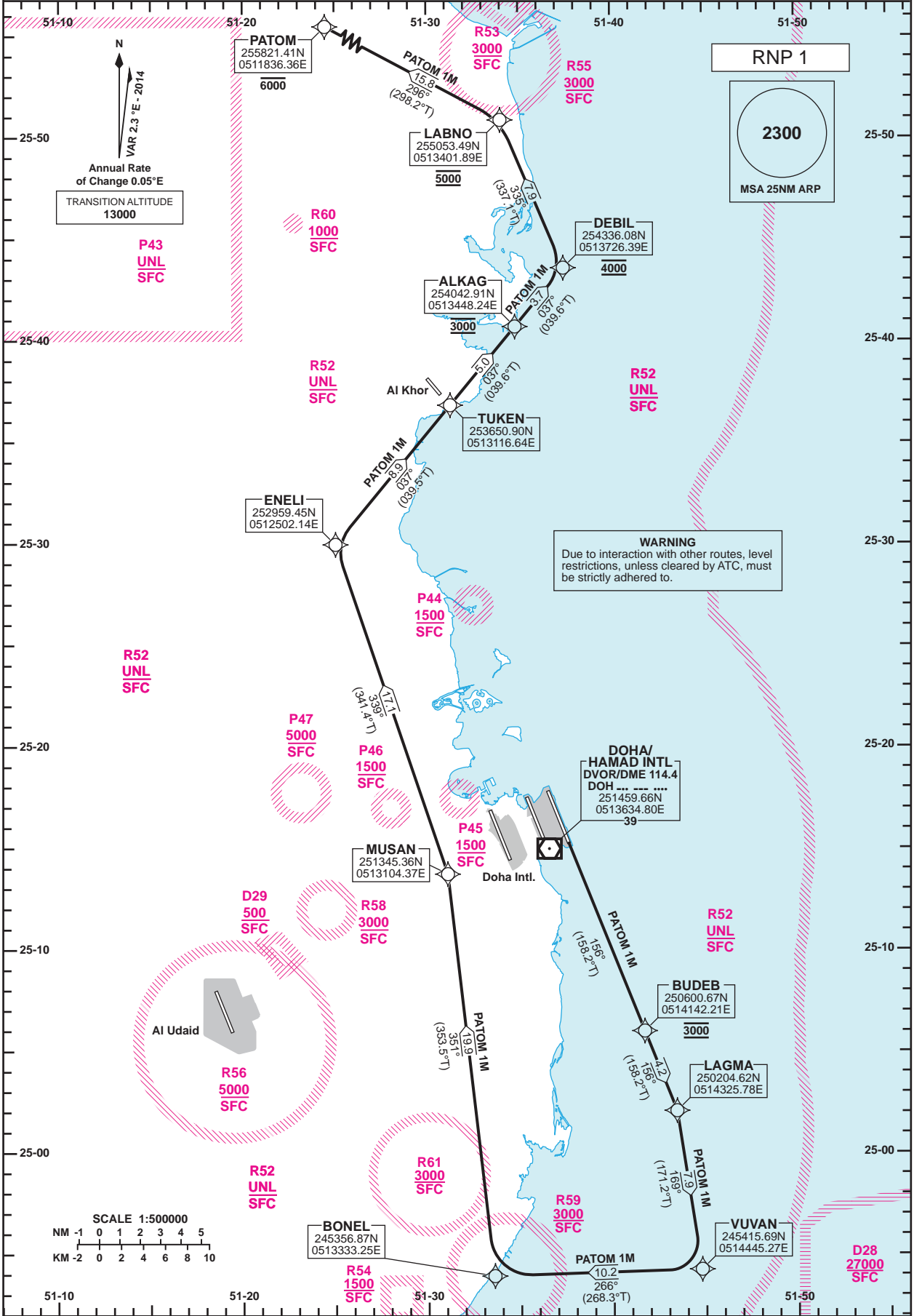


STANDARD DEPARTURE CHART - INSTRUMENT (SID) - ICAO **DOHA/Hamad Intl. (OTHH) RNP RWY 16L PATOM 1M**

DIST IN NM
BEARINGS ARE MAGNETIC
ALTITUDES AND ELEV IN FEET

DOHA RADAR	121.10
DOHA APP	119.725 / 120.60
TWR (EAST)	118.525 / 118.225
TWR (WEST)	118.025 / 118.225



Route Designator	Routing
PATOM 1M	BUDEB[T158.2;A3000] - LAGMA - VUVAN[R] - BONEL - MUSAN - ENELI - TUKEN - ALKAG[A3000] - DEBIL[A4000] - LABNO[A5000] - PATOM[A6000-]

Changes: New restricted area R61.

STANDARD DEPARTURE
 CHART - INSTRUMENT
 (SID) - ICAO

DOHA/Hamad Intl.(OTHH)
 RNP RWY 16L
 PATOM 1M

TABULAR DESCRIPTION

RNP SID PATOM 1M											
Serial Num	Path Descriptor	Waypoint Identifier	Fly-over	Course °M(°T)	Magnetic Variation(°)	Distance (NM)	Turn Direction	Altitude (ft)	Speed (kt)	VPA(°)/TCH(ft)	Navigation Specification
1	CF	BUDEB	-	156 (158.2)	2.3	-		@3000			RNP 1
2	TF	LAGMA	-	156 (158.2)	2.3	4.2		-			RNP 1
3	TF	VUVAN	-	169 (171.2)	2.3	7.9	R	-			RNP 1
4	TF	BONEL	-	266 (268.3)	2.3	10.2		-			RNP 1
5	TF	MUSAN	-	351 (353.5)	2.3	19.9		-			RNP 1
6	TF	ENELI	-	339 (341.4)	2.3	17.1		-			RNP 1
7	TF	TUKEN	-	037 (039.5)	2.3	8.9		-			RNP 1
8	TF	ALKAG	-	037 (039.6)	2.3	5.0		@3000			RNP 1
9	TF	DEBIL	-	037 (039.6)	2.3	3.7		@4000			RNP 1
10	TF	LABNO	-	335 (337.1)	2.3	7.9		@5000			RNP 1
11	TF	PATOM	-	296 (298.2)	2.3	15.8		-6000			RNP 1

WAYPOINT LIST

RNP SID PATOM 1M	
Waypoint Identifier	Coordinates
BUDEB	250600.67N 0514142.21E
LAGMA	250204.62N 0514325.78E
VUVAN	245415.69N 0514445.27E
BONEL	245356.87N 0513333.25E
MUSAN	251345.36N 0513104.37E
ENELI	252959.45N 0512502.14E
TUKEN	253650.90N 0513116.64E
ALKAG	254042.91N 0513448.24E
DEBIL	254336.08N 0513726.39E
LABNO	255053.49N 0513401.89E
PATOM	255821.41N 0511836.36E