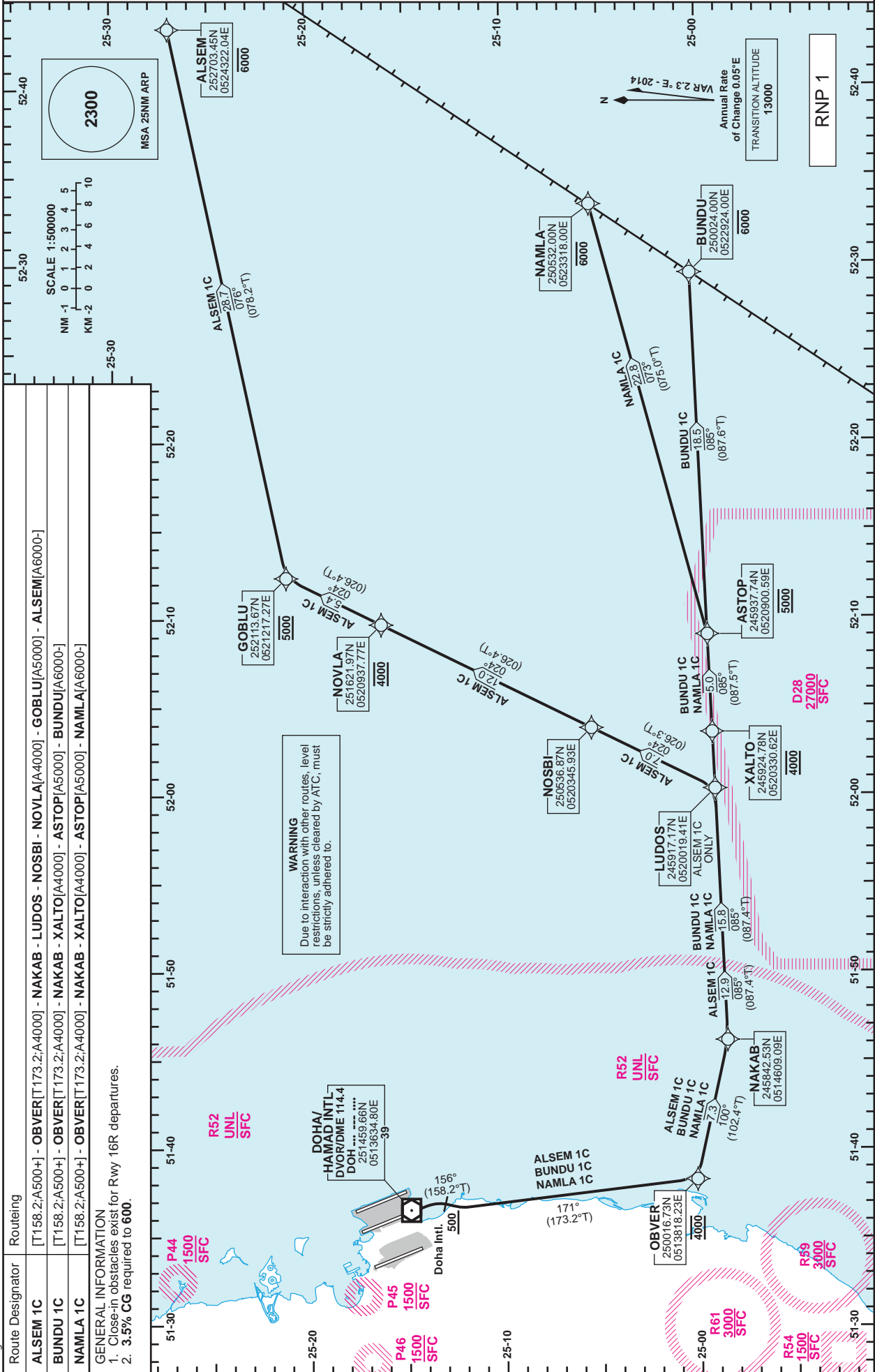


**STANDARD DEPARTURE  
CHART - INSTRUMENT  
(SID) - ICAO**

DIST IN NM  
BEARINGS ARE MAGNETIC  
ALTITUDES AND ELEV IN FEET

DOHA RADAR	121.10
DOHA APP	119.725 / 120.60
TWR (EAST)	118.525 / 118.225
TWR (WEST)	118.025 / 118.225

**DOHA/Hamad Intl. (OTHH)  
RNP RWY 16R  
ALSEM 1C /BUNDU 1C /NAMLA 1C**



Changes: New restricted area R61.

Route Designator	Routing
ALSEM 1C	[T158.2;A500+] - OBVER[T173.2;A4000] - NAKAB - LUDOS - NOSBI - NOVLA[A4000] - GOBLU[A5000] - ALSEM[A6000]
BUNDU 1C	[T158.2;A500+] - OBVER[T173.2;A4000] - NAKAB - XALTO[A4000] - ASTOP[A5000] - BUNDU[A6000]
NAMLA 1C	[T158.2;A500+] - OBVER[T173.2;A4000] - NAKAB - XALTO[A4000] - ASTOP[A5000] - NAMLA[A6000]

**GENERAL INFORMATION**

1. Close-in obstacles exist for Rwy 16R departures.
2. 3.5% CG required to 600.

STANDARD DEPARTURE  
CHART - INSTRUMENT  
(SID) - ICAO

DOHA/Hamad Intl.(OTHH)  
RNP RWY 16R  
ALSEM 1C /BUNDU 1C /NAMLA 1C

TABULAR DESCRIPTION

RNP SID ALSEM 1C											
Serial Num	Path Descriptor	Waypoint Identifier	Fly-over	Course °M(°T)	Magnetic Variation(°)	Distance (NM)	Turn Direction	Altitude (ft)	Speed (kt)	VPA(°)/TCH(ft)	Navigation Specification
1	CA	-	-	156 (158.2)	2.3	-		+500			RNP 1
2	CF	OBVER	-	171 (173.2)	2.3	-		@4000			RNP 1
3	TF	NAKAB	-	100 (102.4)	2.3	7.3		-			RNP 1
4	TF	LUDOS	-	085 (087.4)	2.3	12.9		-			RNP 1
5	TF	NOSBI	-	024 (026.3)	2.3	7.0		-			RNP 1
6	TF	NOVLA	-	024 (026.4)	2.3	12.0		@4000			RNP 1
7	TF	GOBLU	-	024 (026.4)	2.3	5.4		@5000			RNP 1
8	TF	ALSEM	-	076 (078.2)	2.3	28.7		-6000			RNP 1

RNP SID BUNDU 1C											
Serial Num	Path Descriptor	Waypoint Identifier	Fly-over	Course °M(°T)	Magnetic Variation(°)	Distance (NM)	Turn Direction	Altitude (ft)	Speed (kt)	VPA(°)/TCH(ft)	Navigation Specification
1	CA	-	-	156 (158.2)	2.3	-		+500			RNP 1
2	CF	OBVER	-	171 (173.2)	2.3	-		@4000			RNP 1
3	TF	NAKAB	-	100 (102.4)	2.3	7.3		-			RNP 1
4	TF	XALTO	-	085 (087.4)	2.3	15.8		@4000			RNP 1
5	TF	ASTOP	-	085 (087.5)	2.3	5.0		@5000			RNP 1
6	TF	BUNDU	-	085 (087.6)	2.3	18.5		-6000			RNP 1

RNP SID NAMLA 1C											
Serial Num	Path Descriptor	Waypoint Identifier	Fly-over	Course °M(°T)	Magnetic Variation(°)	Distance (NM)	Turn Direction	Altitude (ft)	Speed (kt)	VPA(°)/TCH(ft)	Navigation Specification
1	CA	-	-	156 (158.2)	2.3	-		+500			RNP 1
2	CF	OBVER	-	171 (173.2)	2.3	-		@4000			RNP 1
3	TF	NAKAB	-	100 (102.4)	2.3	7.3		-			RNP 1
4	TF	XALTO	-	085 (087.4)	2.3	15.8		@4000			RNP 1
5	TF	ASTOP	-	085 (087.5)	2.3	5.0		@5000			RNP 1
6	TF	NAMLA	-	073 (075.0)	2.3	22.8		-6000			RNP 1

WAYPOINT LIST

RNP SID ALSEM 1C /BUNDU 1C /NAMLA 1C	
Waypoint Identifier	Coordinates
OBVER	250016.73N 0513818.23E
NAKAB	245842.53N 0514609.09E
LUDOS	245917.17N 0520019.41E
NOSBI	250536.87N 0520345.93E
NOVLA	251621.97N 0520937.77E
GOBLU	252113.67N 0521217.27E
ALSEM	252703.45N 0524322.04E
XALTO	245924.78N 0520330.62E
ASTOP	245937.74N 0520900.59E
BUNDU	250024.00N 0522924.00E
NAMLA	250532.00N 0523318.00E