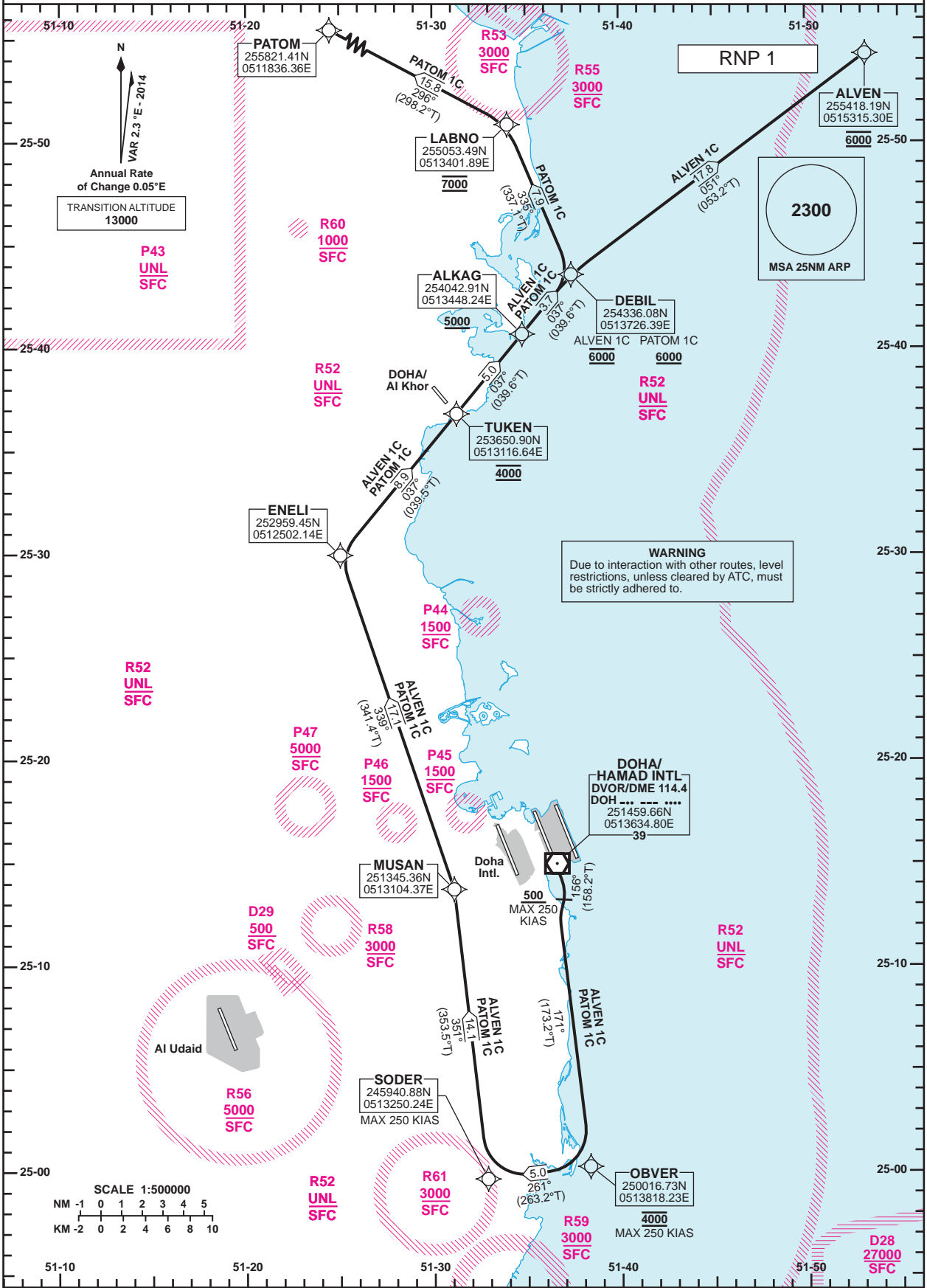


**STANDARD DEPARTURE CHART - INSTRUMENT (SID) - ICAO**

**DOHA/Hamad Intl. (OTHH) RNP RWY 16R ALVEN 1C /PATOM 1C**

DIST IN NM  
BEARINGS ARE MAGNETIC  
ALTITUDES AND ELEV IN FEET

DOHA RADAR	121.10
DOHA APP	119.725 / 120.60
TWR (EAST)	118.525 / 118.225
TWR (WEST)	118.025 / 118.225



**WARNING**  
Due to interaction with other routes, level restrictions, unless cleared by ATC, must be strictly adhered to.

Route Designator	Routing
ALVEN 1C	[T158.2;A500+;K250-] - OBVER[R;T173.2;A4000;K250-] - SODER[R;K250-] - MUSAN - ENELI - TUKEN[A4000] - ALKAG[A5000+] - DEBIL[A6000] - ALVEN[A6000]
PATOM 1C	[T158.2;A500+;K250-] - OBVER[R;T173.2;A4000;K250-] - SODER[R;K250-] - MUSAN - ENELI - TUKEN[A4000] - ALKAG[A5000+] - DEBIL[A6000+] - LABNO[A7000] - PATOM

**GENERAL INFORMATION**  
1. Close-in obstacles exist for Rwy 16R departures.  
2. 3.5% CG required to 600.

Changes: New restricted area R61.

STANDARD DEPARTURE  
 CHART - INSTRUMENT  
 (SID) - ICAO

DOHA/Hamad Intl.(OTHH)  
 RNP RWY 16R  
 ALVEN 1C /PATOM 1C

TABULAR DESCRIPTION

RNP SID ALVEN 1C											
Serial Num	Path Descriptor	Waypoint Identifier	Fly-over	Course °M(°T)	Magnetic Variation(°)	Distance (NM)	Turn Direction	Altitude (ft)	Speed (kt)	VPA(°)/TCH(ft)	Navigation Specification
1	CA		-	156 (158.2)	2.3	-		+500	-250		RNP 1
2	CF	OBVER	-	171 (173.2)	2.3	-	R	@4000	-250		RNP 1
3	TF	SODER	-	261 (263.2)	2.3	5.0	R	-	-250		RNP 1
4	TF	MUSAN	-	351 (353.5)	2.3	14.1		-			RNP 1
5	TF	ENELI	-	339 (341.4)	2.3	17.1		-			RNP 1
6	TF	TUKEN	-	037 (039.5)	2.3	8.9		@4000			RNP 1
7	TF	ALKAG	-	037 (039.6)	2.3	5.0		+5000			RNP 1
8	TF	DEBIL	-	037 (039.6)	2.3	3.7		@6000			RNP 1
9	TF	ALVEN	-	051 (053.2)	2.3	17.8		@6000			RNP 1

RNP SID PATOM 1C											
Serial Num	Path Descriptor	Waypoint Identifier	Fly-over	Course °M(°T)	Magnetic Variation(°)	Distance (NM)	Turn Direction	Altitude (ft)	Speed (kt)	VPA(°)/TCH(ft)	Navigation Specification
1	CA		-	156 (158.2)	2.3	-		+500	-250		RNP 1
2	CF	OBVER	-	171 (173.2)	2.3	-	R	@4000	-250		RNP 1
3	TF	SODER	-	261 (263.2)	2.3	5.0	R	-	-250		RNP 1
4	TF	MUSAN	-	351 (353.5)	2.3	14.1		-			RNP 1
5	TF	ENELI	-	339 (341.4)	2.3	17.1		-			RNP 1
6	TF	TUKEN	-	037 (039.5)	2.3	8.9		@4000			RNP 1
7	TF	ALKAG	-	037 (039.6)	2.3	5.0		+5000			RNP 1
8	TF	DEBIL	-	037 (039.6)	2.3	3.7		+6000			RNP 1
9	TF	LABNO	-	335 (337.1)	2.3	7.9		@7000			RNP 1
10	TF	PATOM	-	296 (298.2)	2.3	15.8		-			RNP 1

WAYPOINT LIST

RNP SID ALVEN 1C /PATOM 1C	
Waypoint Identifier	Coordinates
OBVER	250016.73N 0513818.23E
SODER	245940.88N 0513250.24E
MUSAN	251345.36N 0513104.37E
ENELI	252959.45N 0512502.14E
TUKEN	253650.90N 0513116.64E
ALKAG	254042.91N 0513448.24E
DEBIL	254336.08N 0513726.39E
ALVEN	255418.19N 0515315.30E
LABNO	255053.49N 0513401.89E
PATOM	255821.41N 0511836.36E