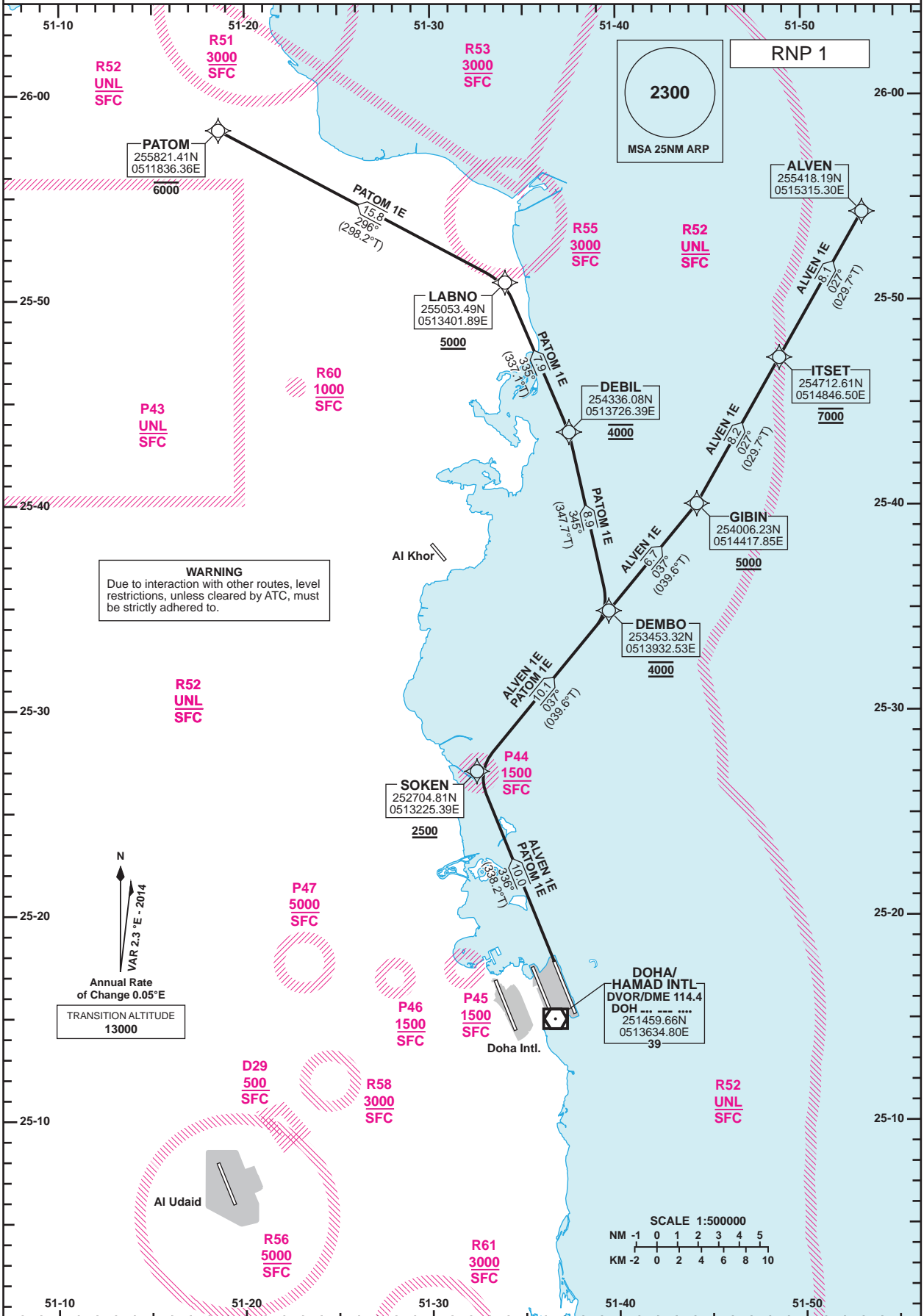


**STANDARD DEPARTURE CHART - INSTRUMENT (SID) - ICAO**

DIST IN NM  
BEARINGS ARE MAGNETIC  
ALTITUDES AND ELEV IN FEET

**DOHA/Hamad Intl. (OTHH) RNP RWY 34R**  
**ALVEN 1E /PATOM 1E**

|            |                   |
|------------|-------------------|
| DOHA RADAR | 121.10            |
| DOHA APP   | 119.725 / 120.60  |
| TWR (EAST) | 118.525 / 118.225 |
| TWR (WEST) | 118.025 / 118.225 |



| Route Designator | Routing   |
|------------------|---|
| ALVEN 1E         | SOKEN[T338.2; A2500+] - DEMBO[A4000] - GIBIN[A5000+] - ITSET[A7000] - ALVEN         |
| PATOM 1E         | SOKEN[T338.2; A2500+] - DEMBO[A4000] - DEBIL[A4000] - LABNO[A5000+] - PATOM[A6000-] |

GENERAL INFORMATION  
1. Close-in obstacles exist for Rwy 34R departures.

Changes: New restricted area R61.

STANDARD DEPARTURE  
 CHART - INSTRUMENT  
 (SID) - ICAO

DOHA/Hamad Intl.(OTHH)  
 RNP RWY 34R  
 ALVEN 1E /PATOM 1E

TABULAR DESCRIPTION

| RNP SID ALVEN 1E |      |                     |          |               |                       |               |                |               |            |                |                          |
|------------------|------|---------------------|----------|---------------|-----------------------|---------------|----------------|---------------|------------|----------------|--------------------------|
| Serial Num       | Path | Waypoint Identifier | Fly-over | Course °M(°T) | Magnetic Variation(°) | Distance (NM) | Turn Direction | Altitude (ft) | Speed (kt) | VPA(°)/TCH(ft) | Navigation Specification |
| 1                | CF   | SOKEN               | -        | 336 (338.2)   | 2.3                   | -             |                | +2500         |            |                | RNP 1                    |
| 2                | TF   | DEMBO               | -        | 037 (039.6)   | 2.3                   | 10.1          |                | @4000         |            |                | RNP 1                    |
| 3                | TF   | GIBIN               | -        | 037 (039.6)   | 2.3                   | 6.7           |                | +5000         |            |                | RNP 1                    |
| 4                | TF   | ITSET               | -        | 027 (029.7)   | 2.3                   | 8.2           |                | @7000         |            |                | RNP 1                    |
| 5                | TF   | ALVEN               | -        | 027 (029.7)   | 2.3                   | 8.1           |                | -             |            |                | RNP 1                    |

| RNP SID PATOM 1E |                 |                     |          |               |                       |               |                |               |            |                |                          |
|------------------|-----------------|---------------------|----------|---------------|-----------------------|---------------|----------------|---------------|------------|----------------|--------------------------|
| Serial Num       | Path Descriptor | Waypoint Identifier | Fly-over | Course °M(°T) | Magnetic Variation(°) | Distance (NM) | Turn Direction | Altitude (ft) | Speed (kt) | VPA(°)/TCH(ft) | Navigation Specification |
| 1                | CF              | SOKEN               | -        | 336 (338.2)   | 2.3                   | -             |                | +2500         |            |                | RNP 1                    |
| 2                | TF              | DEMBO               | -        | 037 (039.6)   | 2.3                   | 10.1          |                | @4000         |            |                | RNP 1                    |
| 3                | TF              | DEBIL               | -        | 345 (347.7)   | 2.3                   | 8.9           |                | @4000         |            |                | RNP 1                    |
| 4                | TF              | LABNO               | -        | 335 (337.1)   | 2.3                   | 7.9           |                | +5000         |            |                | RNP 1                    |
| 5                | TF              | PATOM               | -        | 296 (298.2)   | 2.3                   | 15.8          |                | -6000         |            |                | RNP 1                    |

WAYPOINT LIST

| RNP SID ALVEN 1E /PATOM 1E |                        |
|----------------------------|------------------------|
| Waypoint Identifier        | Coordinates            |
| SOKEN                      | 252704.81N 0513225.39E |
| DEMBO                      | 253453.32N 0513932.53E |
| GIBIN                      | 254006.23N 0514417.85E |
| ITSET                      | 254712.61N 0514846.50E |
| ALVEN                      | 255418.19N 0515315.30E |
| DEBIL                      | 254336.08N 0513726.39E |
| LABNO                      | 255053.49N 0513401.89E |
| PATOM                      | 255821.41N 0511836.36E |