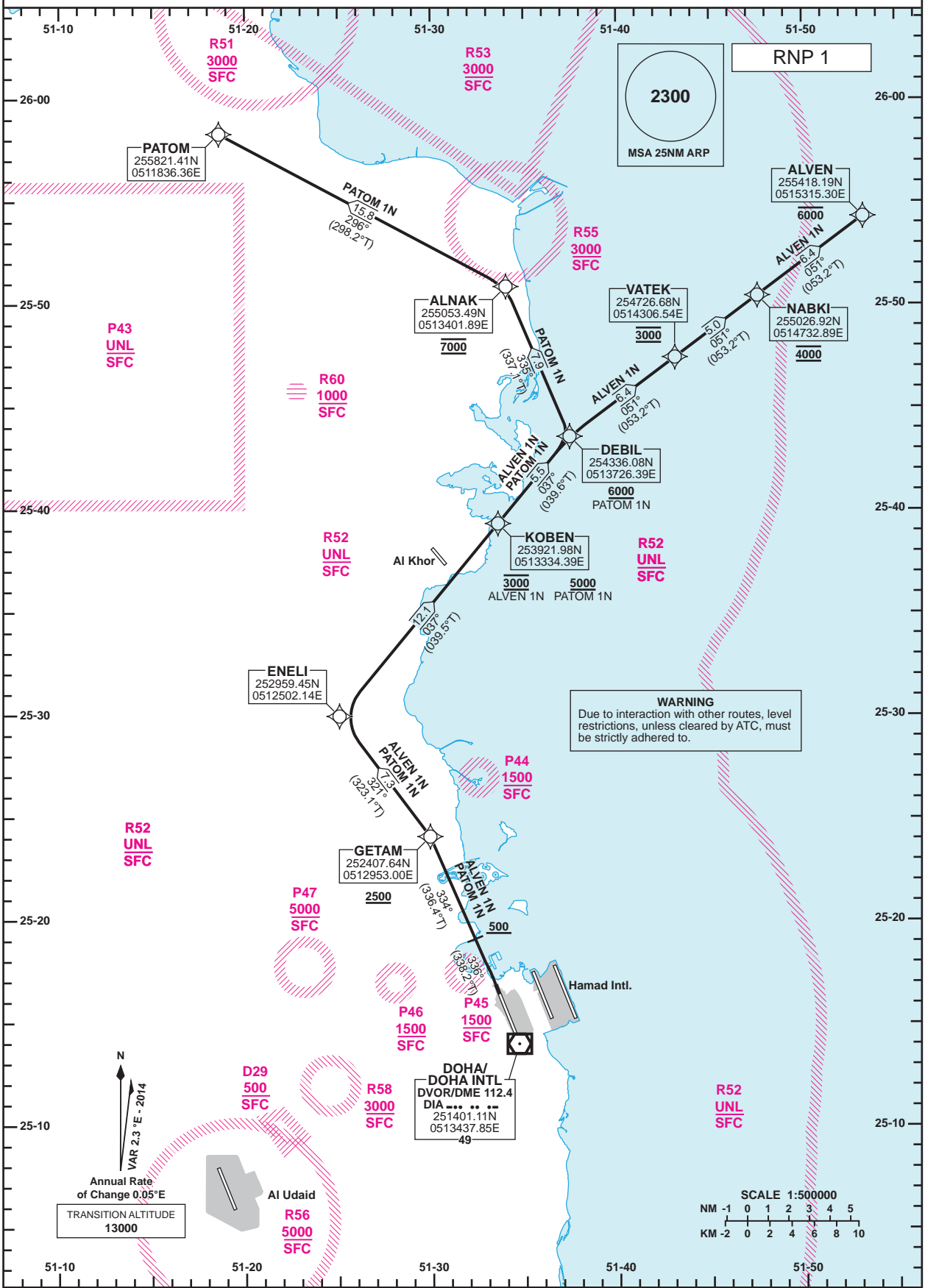


**STANDARD DEPARTURE CHART - INSTRUMENT (SID) - ICAO**      DIST IN NM      BEARINGS ARE MAGNETIC      ALTITUDES AND ELEV IN FEET      **DOHA RADAR 121.10**      **DOHA APP 119.725 / 120.60**      **TWR 118.90 / 119.025**      **DOHA/Doha Intl. (OTBD) RNP RWY 33 ALVEN 1N/PATOM 1N**



Route Designator	Routing
<b>ALVEN 1N</b>	[T338.2; A500+] - GETAM[T336.4; A2500+] - ENELI - KOBEN[A3000] - DEBIL - VATEK[A3000] - NABKI[A4000] - ALVEN[A6000-]
<b>PATOM 1N</b>	[T338.2; A500+] - GETAM[T336.4; A2500+] - ENELI - KOBEN[A5000+] - DEBIL[A6000+] - ALNAK[A7000] - PATOM

**GENERAL INFORMATION**  
 1. Close-in obstacles exist for Rwy 33 departures.  
 2. **9.2% CG** required to **640**.

Changes: Significant point LABNO renamed to ALNAK.

**STANDARD DEPARTURE  
CHART - INSTRUMENT  
(SID) - ICAO**

**DOHA/Doha Intl.(OTBD)  
RNP RWY 33  
ALVEN 1N /PATOM 1N**

**TABULAR DESCRIPTION**

RNP SID ALVEN 1N											
Serial Num	Path Descriptor	Waypoint Identifier	Fly-over	Course °M(°T)	Magnetic Variation(°)	Distance (NM)	Turn Direction	Altitude (ft)	Speed (kt)	VPA(°)/TCH(ft)	Navigation Specification
1	CA	-	-	336 (338.2)	2.3	-	-	+500	-	-	RNP 1
2	CF	GETAM	-	334 (336.4)	2.3	-	-	+2500	-	-	RNP 1
3	TF	ENELI	-	321 (323.1)	2.3	7.3	-	-	-	-	RNP 1
4	TF	KOBEN	-	037 (039.5)	2.3	12.1	-	@3000	-	-	RNP 1
5	TF	DEBIL	-	037 (039.6)	2.3	5.5	-	-	-	-	RNP 1
6	TF	VATEK	-	051 (053.2)	2.3	6.4	-	@3000	-	-	RNP 1
7	TF	NABKI	-	051 (053.2)	2.3	5.0	-	@4000	-	-	RNP 1
8	TF	ALVEN	-	051 (053.2)	2.3	6.4	-	-6000	-	-	RNP 1

RNP SID PATOM 1N											
Serial Num	Path Descriptor	Waypoint Identifier	Fly-over	Course °M(°T)	Magnetic Variation(°)	Distance (NM)	Turn Direction	Altitude (ft)	Speed (kt)	VPA(°)/TCH(ft)	Navigation Specification
1	CA	-	-	336 (338.2)	2.3	-	-	+500	-	-	RNP 1
2	CF	GETAM	-	334 (336.4)	2.3	-	-	+2500	-	-	RNP 1
3	TF	ENELI	-	321 (323.1)	2.3	7.3	-	-	-	-	RNP 1
4	TF	KOBEN	-	037 (039.5)	2.3	12.1	-	+5000	-	-	RNP 1
5	TF	DEBIL	-	037 (039.6)	2.3	5.5	-	+6000	-	-	RNP 1
6	TF	ALNAK	-	335 (337.1)	2.3	7.9	-	@7000	-	-	RNP 1
7	TF	PATOM	-	296 (298.2)	2.3	15.8	-	-	-	-	RNP 1

**WAYPOINT LIST**

RNP SID ALVEN 1N /PATOM 1N	
Waypoint Identifier	Coordinates
GETAM	252407.64N 0512953.00E
ENELI	252959.45N 0512502.14E
KOBEN	253921.98N 0513334.39E
DEBIL	254336.08N 0513726.39E
VATEK	254726.68N 0514306.54E
NABKI	255026.92N 0514732.89E
ALVEN	255418.19N 0515315.30E
ALNAK	255053.49N 0513401.89E
PATOM	255821.41N 0511836.36E