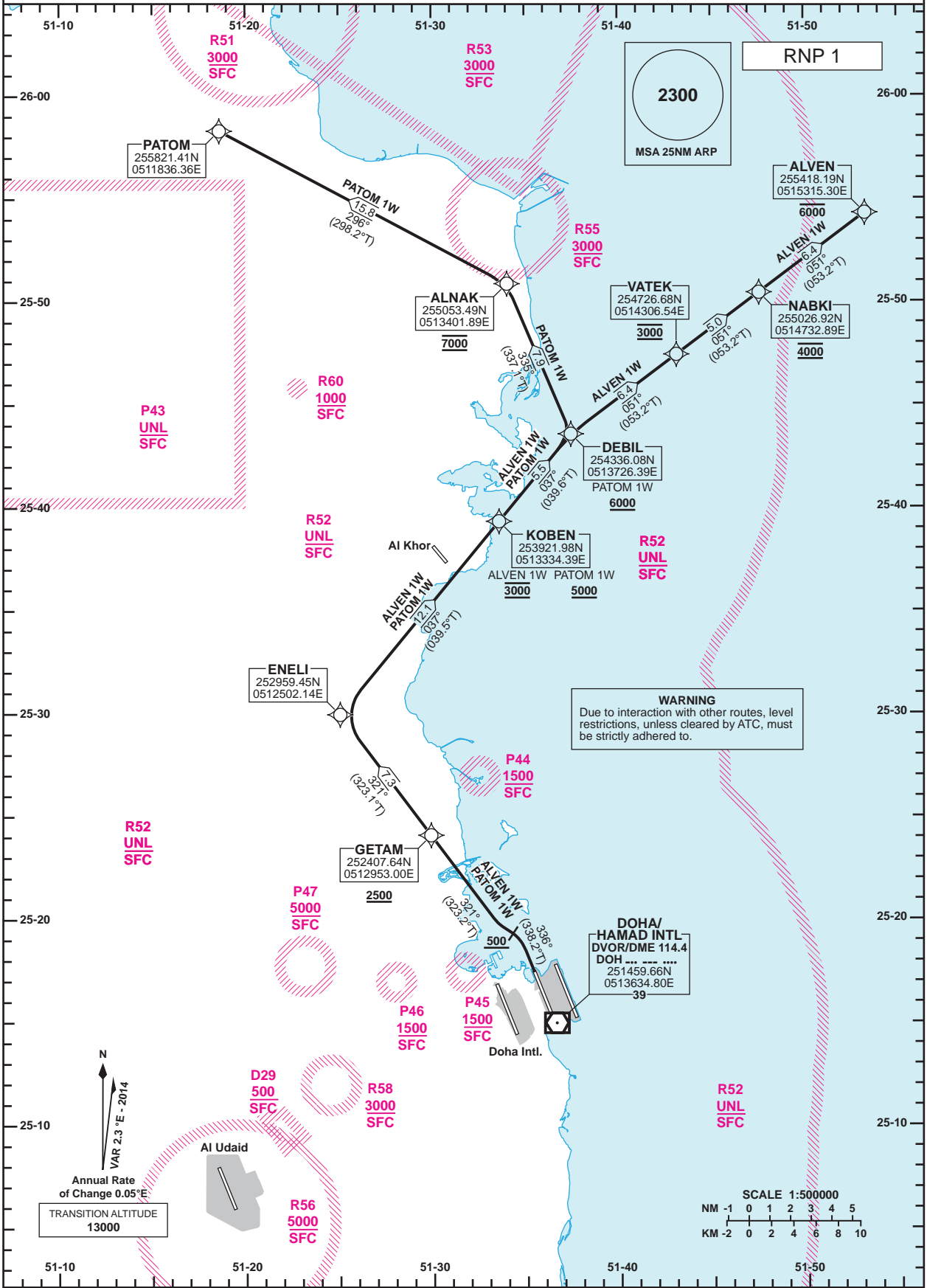


STANDARD DEPARTURE CHART - INSTRUMENT (SID) - ICAO

DIST IN NM
BEARINGS ARE MAGNETIC
ALTITUDES AND ELEV IN FEET

DOHA/Hamad Intl. (OTHH)
RNP RWY 34L
ALVEN 1W /PATOM 1W

| | |
|------------|-------------------|
| DOHA RADAR | 121.10 |
| DOHA APP | 119.725 / 120.60 |
| TWR (EAST) | 118.525 / 118.225 |
| TWR (WEST) | 118.025 / 118.225 |



| Route Designator | Routing |
|------------------|------------------------------------------------------------------------------------------------------------------------------|
| ALVEN 1W | [T338.2; A500+] - GETAM [T323.2; A2500+] - ENELI - KOBEN[A3000] - DEBIL - VATEK[A3000] - NABKI[A4000] - ALVEN[A6000+] |
| PATOM 1W | [T338.2; A500+] - GETAM [T323.2; A2500+] - ENELI - KOBEN[A5000+] - DEBIL[A6000+] - ALNAK[A7000] - PATOM |

GENERAL INFORMATION
 1. Close-in obstacles exist for Rwy 34L departures.
 2. **4.8% CG** required to **1200**.

Changes: Significant point LABNO renamed to ALNAK.

**STANDARD DEPARTURE
CHART - INSTRUMENT
(SID) - ICAO**

**DOHA/Hamad Intl.(OTHH)
RNP RWY 34L
ALVEN 1W /PATOM 1W**

TABULAR DESCRIPTION

| RNP SID ALVEN 1W | | | | | | | | | | | |
|------------------|-----------------|---------------------|----------|---------------|-----------------------|---------------|----------------|---------------|------------|----------------|--------------------------|
| Serial Num | Path Descriptor | Waypoint Identifier | Fly-over | Course °M(°T) | Magnetic Variation(°) | Distance (NM) | Turn Direction | Altitude (ft) | Speed (kt) | VPA(°)/TCH(ft) | Navigation Specification |
| 1 | CA | - | - | 336 (338.2) | 2.3 | - | | +500 | | | RNP 1 |
| 2 | CF | GETAM | - | 321 (323.2) | 2.3 | - | | +2500 | | | RNP 1 |
| 3 | TF | ENELI | - | 321 (323.1) | 2.3 | 7.3 | | - | | | RNP 1 |
| 4 | TF | KOBEN | - | 037 (039.5) | 2.3 | 12.1 | | @3000 | | | RNP 1 |
| 5 | TF | DEBIL | - | 037 (039.6) | 2.3 | 5.5 | | - | | | RNP 1 |
| 6 | TF | VATEK | - | 051 (053.2) | 2.3 | 6.4 | | @3000 | | | RNP 1 |
| 7 | TF | NABKI | - | 051 (053.2) | 2.3 | 5.0 | | @4000 | | | RNP 1 |
| 8 | TF | ALVEN | - | 051 (053.2) | 2.3 | 6.4 | | -6000 | | | RNP 1 |

| RNP SID PATOM 1W | | | | | | | | | | | |
|------------------|-----------------|---------------------|----------|---------------|-----------------------|---------------|----------------|---------------|------------|----------------|--------------------------|
| Serial Num | Path Descriptor | Waypoint Identifier | Fly-over | Course °M(°T) | Magnetic Variation(°) | Distance (NM) | Turn Direction | Altitude (ft) | Speed (kt) | VPA(°)/TCH(ft) | Navigation Specification |
| 1 | CA | - | - | 336 (338.2) | 2.3 | - | | +500 | | | RNP 1 |
| 2 | CF | GETAM | - | 321 (323.2) | 2.3 | - | | +2500 | | | RNP 1 |
| 3 | TF | ENELI | - | 321 (323.1) | 2.3 | 7.3 | | - | | | RNP 1 |
| 4 | TF | KOBEN | - | 037 (039.5) | 2.3 | 12.1 | | +5000 | | | RNP 1 |
| 5 | TF | DEBIL | - | 037 (039.6) | 2.3 | 5.5 | | +6000 | | | RNP 1 |
| 6 | TF | ALNAK | - | 335 (337.1) | 2.3 | 7.9 | | @7000 | | | RNP 1 |
| 7 | TF | PATOM | - | 296 (298.2) | 2.3 | 15.8 | | - | | | RNP 1 |

WAYPOINT LIST

| RNP SID ALVEN 1W/PATOM 1W | |
|---------------------------|------------------------|
| Waypoint Identifier | Coordinates |
| GETAM | 252407.64N 0512953.00E |
| ENELI | 252959.45N 0512502.14E |
| KOBEN | 253921.98N 0513334.39E |
| DEBIL | 254336.08N 0513726.39E |
| VATEK | 254726.68N 0514306.54E |
| NABKI | 255026.92N 0514732.89E |
| ALVEN | 255418.19N 0515315.30E |
| ALNAK | 255053.49N 0513401.89E |
| PATOM | 255821.41N 0511836.36E |