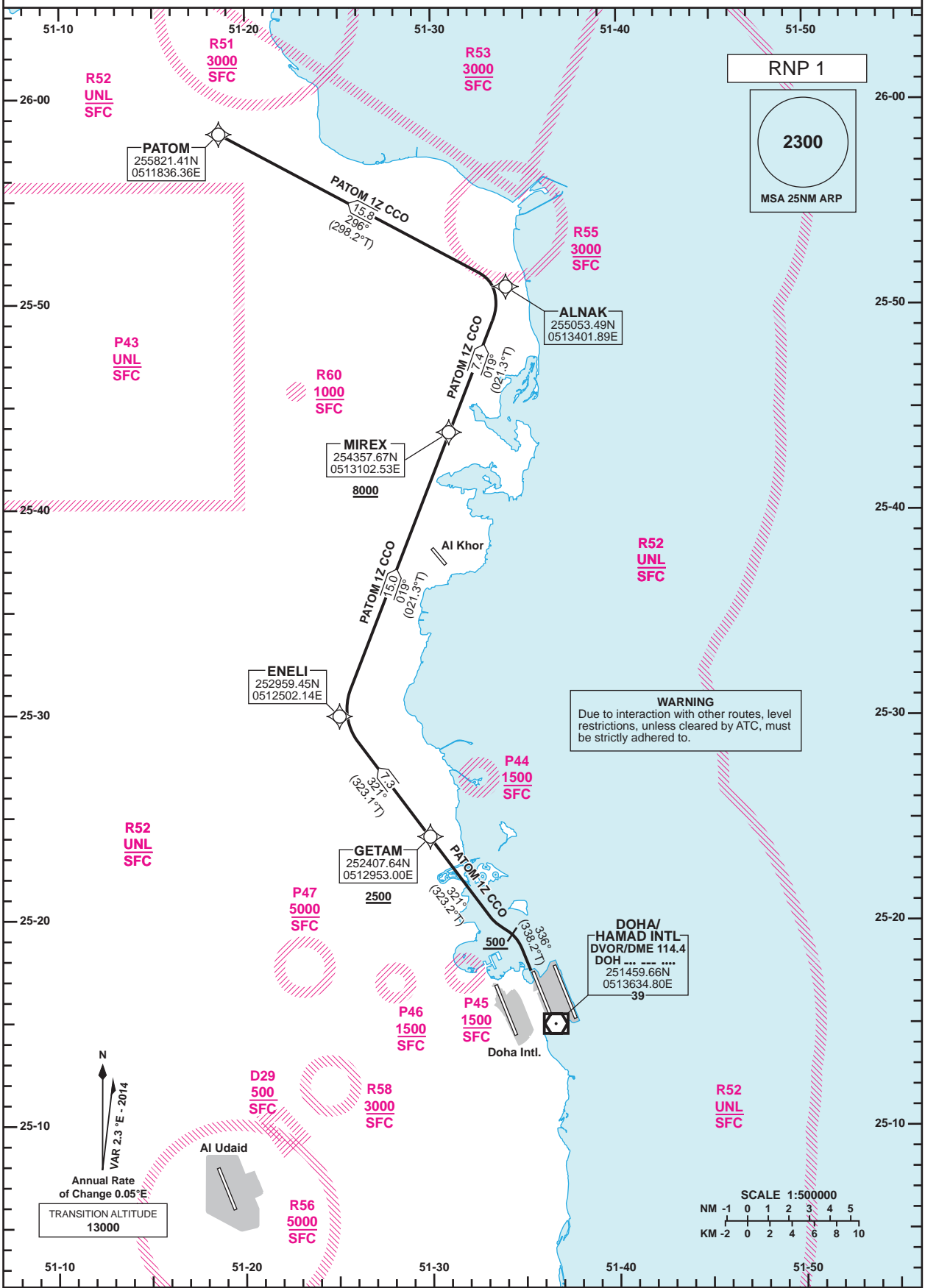


**STANDARD DEPARTURE CHART - INSTRUMENT (SID) - ICAO**      DIST IN NM      DOHA RADAR 121.10  
BEARINGS ARE MAGNETIC      DOHA APP 119.725 / 120.60  
ALTITUDES AND ELEV IN FEET      TWR (EAST) 118.525 / 118.225  
TWR (WEST) 118.025 / 118.225

**DOHA/Hamad Intl. (OTHH) RNP RWY 34L PATOM 1Z CCO**



Route Designator	Routing
<b>PATOM 1Z CCO</b>	[T338.2; A500+] - <b>GETAM</b> [T323.2; A2500+] - <b>ENELI</b> [R] - <b>MIREX</b> [A8000+] - <b>ALNAK</b> [L] - <b>PATOM</b>

**GENERAL INFORMATION**

1. Close-in obstacles exist for Rwy 34L departures.
2. **4.8% CG** required to 1200.

Changes: Significant point LABNO renamed to ALNAK

**STANDARD DEPARTURE  
CHART - INSTRUMENT  
(SID) - ICAO**

**DOHA/Hamad Intl.(OTHH)  
RNP RWY 34L  
PATOM 1Z CCO**

**TABULAR DESCRIPTION**

RNP SID PATOM 1Z CCO											
Serial Num	Path Descriptor	Waypoint Identifier	Fly-over	Course °M(°T)	Magnetic Variation(°)	Distance (NM)	Turn Direction	Altitude (ft)	Speed (kt)	VPA(°)/TCH(ft)	Navigation Specification
1	CA	-	-	336 (338.2)	2.3	-		+500			RNP 1
2	CF	GETAM	-	321 (323.2)	2.3	-		+2500			RNP 1
3	TF	ENELI	-	321 (323.1)	2.3	7.3		-			RNP 1
4	TF	MIREX	-	019(021.3)	2.3	15.0		+8000			RNP 1
5	TF	ALNAK	-	019(021.3)	2.3	7.4		-			RNP 1
6	TF	PATOM	-	296 (298.2)	2.3	15.8		-			RNP 1

**WAYPOINT LIST**

RNP SID PATOM 1Z CCO	
Waypoint Identifier	Coordinates
GETAM	252407.64N 0512953.00E
ENELI	252959.45N 0512502.14E
MIREX	254357.67N 0513102.53E
ALNAK	255053.49N 0513401.89E
PATOM	255821.41N 0511836.36E