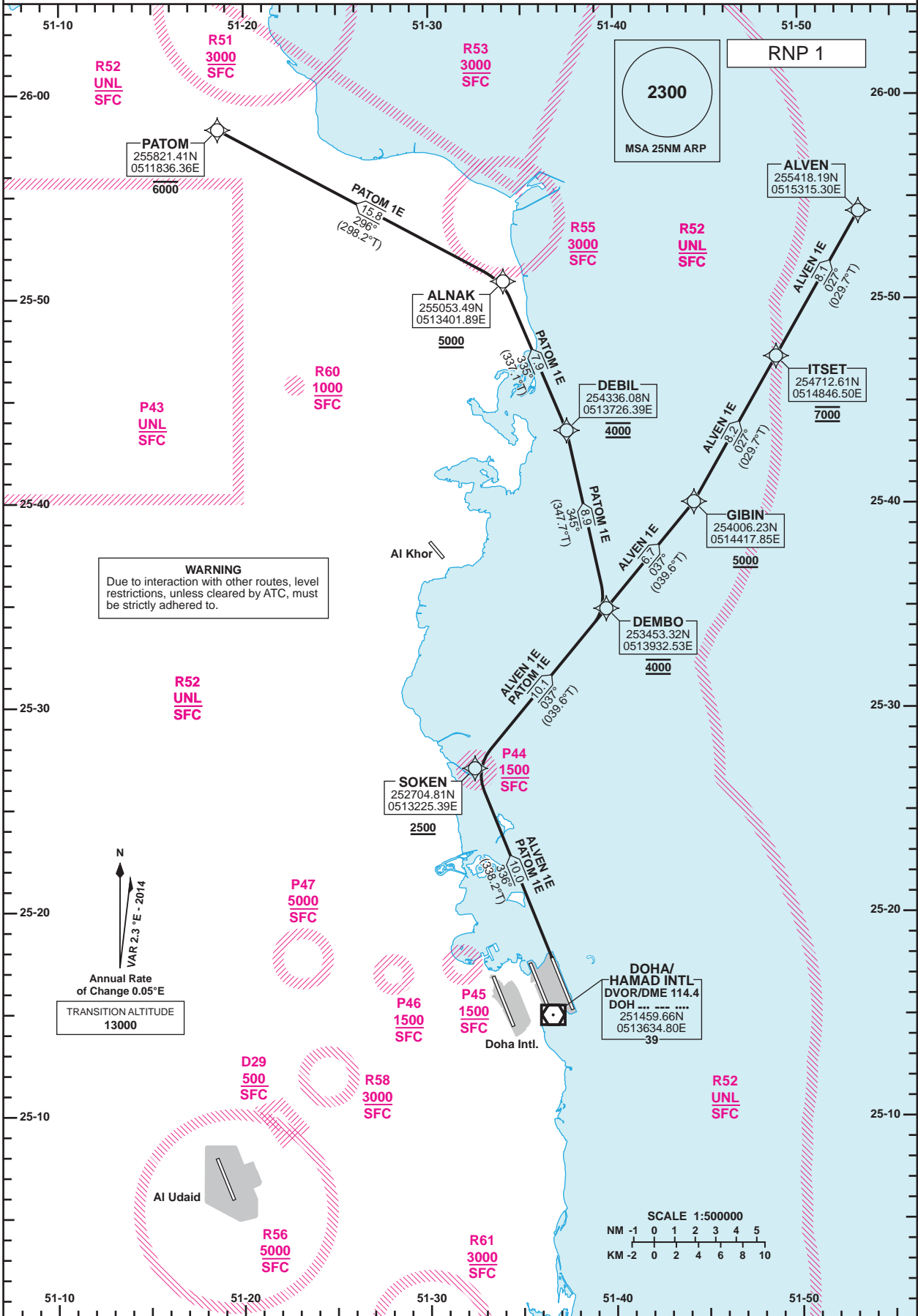


**STANDARD DEPARTURE CHART - INSTRUMENT (SID) - ICAO**

DIST IN NM  
BEARINGS ARE MAGNETIC  
ALTITUDES AND ELEV IN FEET

DOHA RADAR	121.10
DOHA APP	119.725 / 120.60
TWR (EAST)	118.525 / 118.225
TWR (WEST)	118.025 / 118.225

**DOHA/Hamad Intl. (OTHH)  
RNP RWY 34R  
ALVEN 1E /PATOM 1E**



Route Designator	Routing
ALVEN 1E	SOKEN[T338.2; A2500+] - DEMBO[A4000] - GIBIN[A5000+] - ITSET[A7000] - ALVEN
PATOM 1E	SOKEN[T338.2; A2500+] - DEMBO[A4000] - DEBIL[A4000] - ALNAK[A5000+] - PATOM[A6000-]

GENERAL INFORMATION  
1. Close-in obstacles exist for Rwy 34R departures.

Changes: Significant point LABNO renamed to ALNAK.

STANDARD DEPARTURE  
CHART - INSTRUMENT  
(SID) - ICAO

DOHA/Hamad Intl.(OTHH)  
RNP RWY 34R  
ALVEN 1E /PATOM 1E

TABULAR DESCRIPTION

RNP SID ALVEN 1E

Serial Num	Path Descriptor	Waypoint Identifier	Fly-over	Course °M(°T)	Magnetic Variation(°)	Distance (NM)	Turn Direction	Altitude (ft)	Speed (kt)	VPA(°)/TCH(ft)	Navigation Specification
1	CF	SOKEN	-	336 (338.2)	2.3	-		+2500			RNP 1
2	TF	DEMBO	-	037 (039.6)	2.3	10.1		@4000			RNP 1
3	TF	GIBIN	-	037 (039.6)	2.3	6.7		+5000			RNP 1
4	TF	ITSET	-	027 (029.7)	2.3	8.2		@7000			RNP 1
5	TF	ALVEN	-	027 (029.7)	2.3	8.1		-			RNP 1

RNP SID PATOM 1E

Serial Num	Path Descriptor	Waypoint Identifier	Fly-over	Course °M(°T)	Magnetic Variation(°)	Distance (NM)	Turn Direction	Altitude (ft)	Speed (kt)	VPA(°)/TCH(ft)	Navigation Specification
1	CF	SOKEN	-	336 (338.2)	2.3	-		+2500			RNP 1
2	TF	DEMBO	-	037 (039.6)	2.3	10.1		@4000			RNP 1
3	TF	DEBIL	-	345 (347.7)	2.3	8.9		@4000			RNP 1
4	TF	ALNAK	-	335 (337.1)	2.3	7.9		+5000			RNP 1
5	TF	PATOM	-	296 (298.2)	2.3	15.8		-6000			RNP 1

WAYPOINT LIST

RNP SID ALVEN 1E /PATOM 1E

Waypoint Identifier	Coordinates
SOKEN	252704.81N 0513225.39E
DEMBO	253453.32N 0513932.53E
GIBIN	254006.23N 0514417.85E
ITSET	254712.61N 0514846.50E
ALVEN	255418.19N 0515315.30E
DEBIL	254336.08N 0513726.39E
ALNAK	255053.49N 0513401.89E
PATOM	255821.41N 0511836.36E