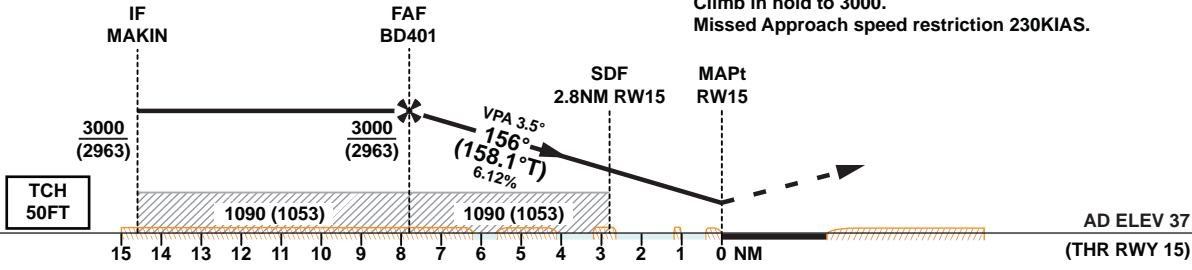


TA 13000

Missed Approach
Climb straight ahead, then turn right to intercept course 186° (188.2°T) to BOTAS. At BOTAS turn left to BUBOG, then left to REVAT and hold. Climb and maintain 2000. Climb in hold to 3000.
Missed Approach speed restriction 230KIAS.



| | | | | | |
|------|------|------|------|------|-----|
| 7 | 6 | 5 | 4 | 3 | 2 |
| 2690 | 2320 | 1950 | 1580 | 1200 | 830 |

Distance from MAPt
ALT (3.5°VPA)

| | | | | | | |
|---|----------|-----------------------|-----------|-------------|-------------|----------|
| OCA (OCH) | | A | B | C | D | E |
| Straight in Approach | LNAV | 520 (483) | | | | |
| | Circling | 690 (653) | 850 (813) | 1240 (1203) | 1550 (1513) | |
| 1. Hold at REVAT protected for Sector 3 Entry only. | | | | | | |
| Approach: MAPt at RW15 | | | | | | |
| Speed | KT | 80 | 100 | 120 | 140 | 160 180 |
| Time | MIN:SEC | Timing Not Authorized | | | | |
| RATE OF DESCENT | FT/MIN | 490 | 610 | 740 | 860 | 990 1110 |