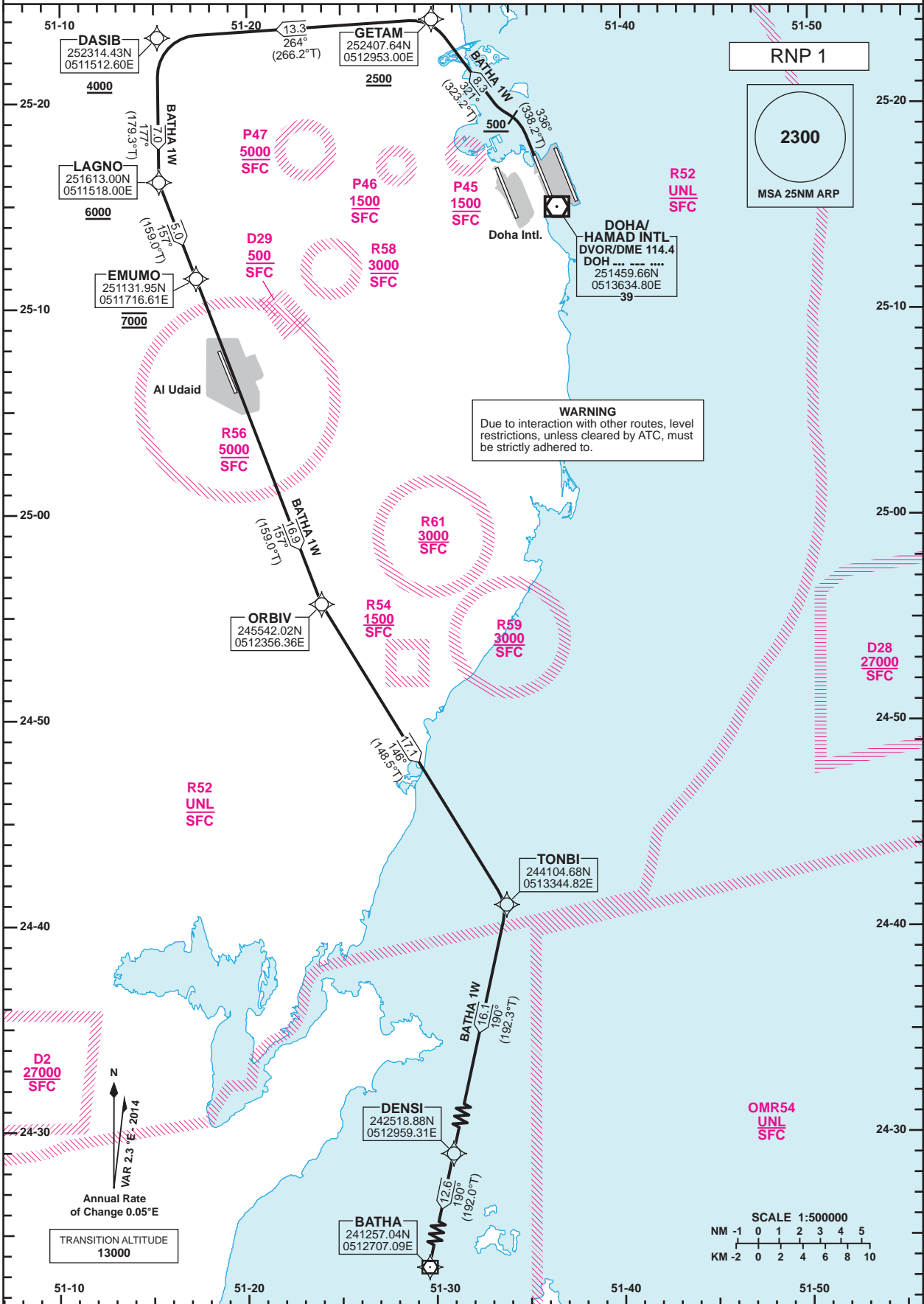


STANDARD DEPARTURE CHART - INSTRUMENT (SID) - ICAO

DIST IN NM
BEARINGS ARE MAGNETIC
ALTITUDES AND ELEV IN FEET

DOHA RADAR	121.10
DOHA APP	119.725 / 120.60
TWR (EAST)	118.525 / 118.225
TWR (WEST)	118.025 / 118.225

**DOHA/Hamad Intl. (OTHH)
RNP RWY 34L
BATHA 1W**



Route Designator	Routing
BATHA 1W	[T338.2; A500+] - GETAM[T323.2; A2500+] - DASIB[A4000+] - LAGNO[A6000+] - EMUMO[A7000] - ORBIV - TONBI - DENSI - BATHA

GENERAL INFORMATION
 1. Close-in obstacles exist for Rwy 34L departures.
 2. **4.8% CG** required to 1200.

Changes: New restricted area R61.

STANDARD DEPARTURE
 CHART - INSTRUMENT
 (SID) - ICAO

DOHA/Hamad Intl.(OTHH)
 RNP RWY 34L
 BATHA 1W

TABULAR DESCRIPTION

RNP SID BATHA 1W											
Serial Num	Path Descriptor	Waypoint Identifier	Fly-over	Course °M(°T)	Magnetic Variation(°)	Distance (NM)	Turn Direction	Altitude (ft)	Speed (kt)	VPA(°)/TCH(ft)	Navigation Specification
1	CA		-	336 (338.2)	2.3	-		+500			RNP 1
2	CF	GETAM	-	321 (323.2)	2.3	-		+2500			RNP 1
3	TF	DASIB	-	264 (266.2)	2.3	13.3		+4000			RNP 1
4	TF	LAGNO	-	177 (179.3)	2.3	7.0		+6000			RNP 1
5	TF	EMUMO	-	157 (159.0)	2.3	5.0		@7000			RNP 1
6	TF	ORBIV	-	157 (159.0)	2.3	16.9		-			RNP 1
7	TF	TONBI	-	146 (148.5)	2.3	17.1		-			RNP 1
8	TF	DENSI	-	190 (192.3)	2.3	16.1		-			RNP 1
9	TF	BATHA	-	190 (192.0)	2.3	12.6		-			RNP 1

WAYPOINT LIST

RNP SID BATHA 1W	
Waypoint Identifier	Coordinates
GETAM	252407.64N 0512953.00E
DASIB	252314.43N 0511512.60E
LAGNO	251613.00N 0511518.00E
EMUMO	251131.95N 0511716.61E
ORBIV	245542.02N 0512356.36E
TONBI	244104.68N 0513344.82E
DENSI	242518.88N 0512959.31E
BATHA	241257.04N 0512707.09E