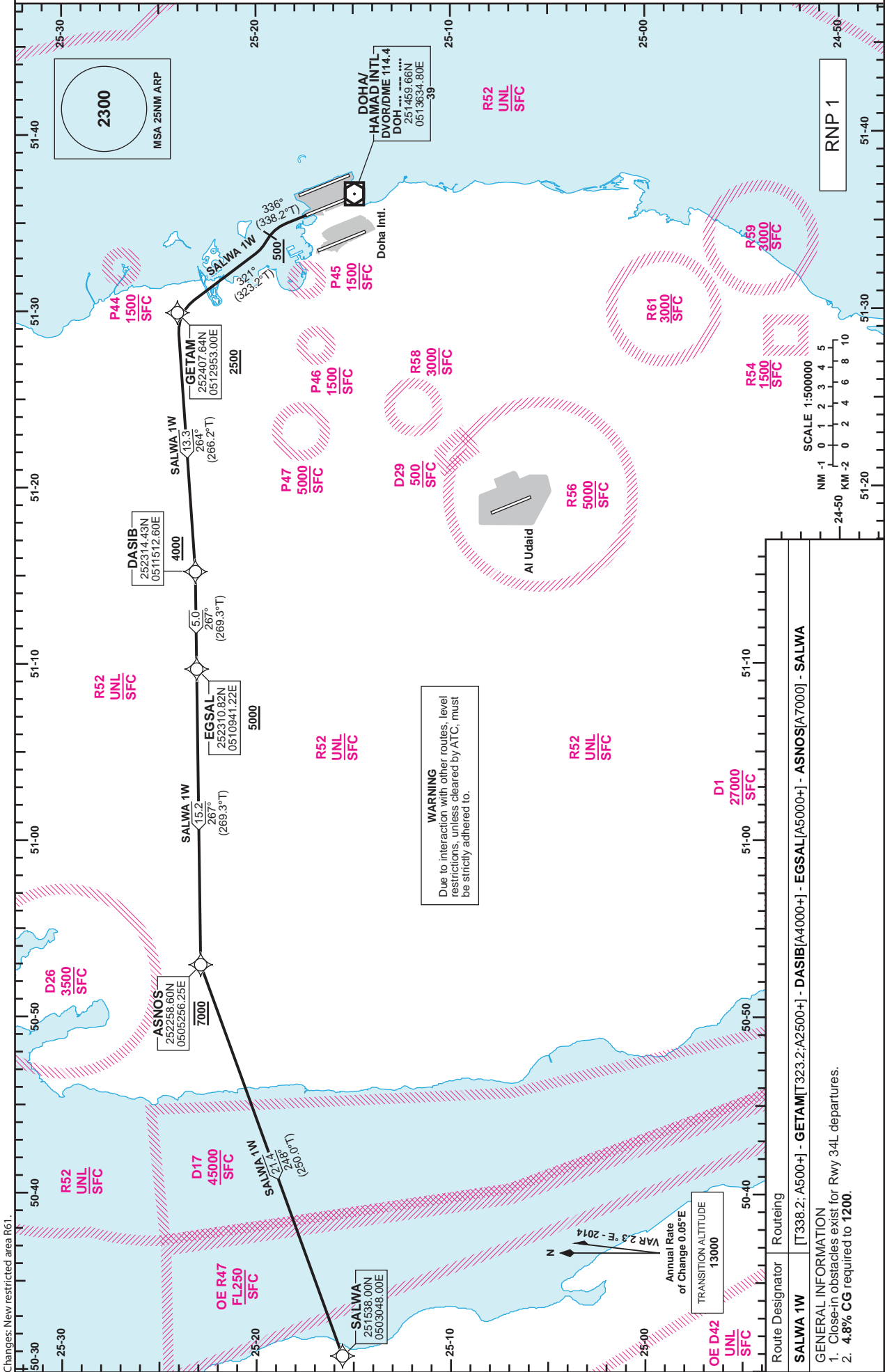


**STANDARD DEPARTURE
CHART - INSTRUMENT
(SID) - ICAO**

DIST IN NM
BEARINGS ARE MAGNETIC
ALTITUDES AND ELEV IN FEET

DOHA RADAR	121.10
DOHA APP	119.725 / 120.60
TWR (EAST)	118.525 / 118.225
TWR (WEST)	118.025 / 118.225

**DOHA/Hamad Intl. (OTHH)
RNP RWY 34L
SALWA 1W**



Changes: New restricted area R61.

WARNING
Due to interaction with other routes, level restrictions, unless cleared by ATC, must be strictly adhered to.

Route Designer	Routing
SALWA 1W	[T338.2; A5000+] - GETAM [T323.2; A2500+] - DASIB [A4000+] - EGSAL [A5000+] - ASNOS [A7000] - SALWA
GENERAL INFORMATION	
1. Close-in obstacles exist for Rwy 34L departures.	
2. 4.8% CG required to 1200.	

STANDARD DEPARTURE
 CHART - INSTRUMENT
 (SID) - ICAO

DOHA/Hamad Intl.(OTHH)
 RNP RWY 34L
 SALWA 1W

TABULAR DESCRIPTION

RNP SID SALWA 1W											
Serial Num	Path Descriptor	Waypoint Identifier	Fly-over	Course °M(°T)	Magnetic Variation(°)	Distance (NM)	Turn Direction	Altitude (ft)	Speed (kt)	VPA(°)/TCH(ft)	Navigation Specification
1	CA	-	-	336 (338.2)	2.3	-		+500			RNP 1
2	CF	GETAM	-	321 (323.2)	2.3	-		+2500			RNP 1
3	TF	DASIB	-	264 (266.2)	2.3	13.3		+4000			RNP 1
4	TF	EGSAL	-	267 (269.3)	2.3	5.0		+5000			RNP 1
5	TF	ASNOS	-	267 (269.3)	2.3	15.2		@7000			RNP 1
6	TF	SALWA	-	248 (250.0)	2.3	21.4		-			RNP 1

WAYPOINT LIST

RNP SID SALWA 1W	
Waypoint Identifier	Coordinates
GETAM	252407.64N 0512953.00E
DASIB	252314.43N 0511512.60E
EGSAL	252310.82N 0510941.22E
ASNOS	252258.60N 0505256.25E
SALWA	251538.00N 0503048.00E