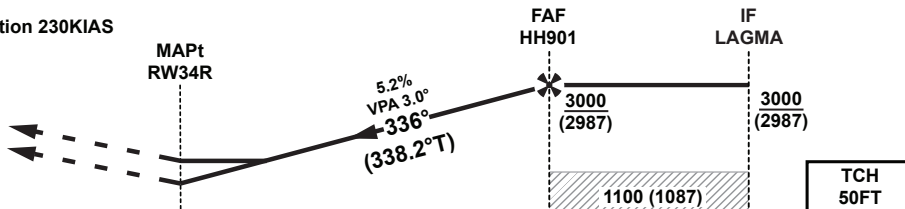


TA 13000

Missed Approach
Climb straight ahead to HH902. At HH902 turn right to GOMBO then right to GENOT. Climb and maintain 4000.
Missed Approach speed restriction 230KIAS



THR ELEV 13
THR RWY 34R

Distances from MAPt	2	3	4	5	6	7	8	9
ALT (3.0° VPA)	700	1020	1340	1660	1980	2300	2620	2930

OCA (OCH)		A	B	C	D
Straight in Approach	LNAV/VNAV	310 (297)			
	LNAV	410 (397)			
Circling		620 (607)		1240 (1227)	
1. HOLD at GENOT protected for sector 3 Entry only.					
Approach: MAPt at RW34R					
Speed	KT	80	100	120	140 160 180
Time	MIN:SEC	Timing Not Authorized			
Rate of Descent	FT/MIN	420	530	640	740 850 960

Changes: Obstacle.

**INSTRUMENT
APPROACH
CHART-ICAO**

**AD ELEV 13
HEIGHTS RELATED TO AD ELEV**

**DOHA/Hamad Intl.(OTHH)
RNP RWY 34R
ACFT A,B,C,D**

TABULAR DESCRIPTION

RNP RWY 34R DANIK

Serial Num	Path Descriptor	Waypoint Identifier	Fly-over	Course °M(°T)	Magnetic Variation(°)	Distance (NM)	Turn Direction	Altitude (ft)	Speed (kt)	VPA(°)/TCH (ft)	Navigation Specification
1	IF	DANIK	-		-2.6	-		+5000	-220		RNP APCH
2	TF	LAGMA	-	066 (068.1)	-2.6	6.1	L	+3000	-180		RNP APCH

RNP RWY 34R EMUNA

Serial Num	Path Descriptor	Waypoint Identifier	Fly-over	Course °M(°T)	Magnetic Variation(°)	Distance (NM)	Turn Direction	Altitude (ft)	Speed (kt)	VPA(°)/TCH (ft)	Navigation Specification
1	IF	EMUNA	-		-2.6	-		+5000	-220		RNP APCH
2	TF	LAGMA	-	342 (344.4)	-2.6	5.0		+3000	-180		RNP APCH

RNP RWY 34R MUXED

Serial Num	Path Descriptor	Waypoint Identifier	Fly-over	Course °M(°T)	Magnetic Variation(°)	Distance (NM)	Turn Direction	Altitude (ft)	Speed (kt)	VPA(°)/TCH (ft)	Navigation Specification
1	IF	MUXED	-		-2.6	-		+5000	-220		RNP APCH
2	TF	LAGMA	-	246 (248.3)	-2.6	5.0	R	+3000	-180		RNP APCH

RNP RWY 34R FINAL

Serial Num	Path Descriptor	Waypoint Identifier	Fly-over	Course °M(°T)	Magnetic Variation(°)	Distance (NM)	Turn Direction	Altitude (ft)	Speed (kt)	VPA(°)/TCH (ft)	Navigation Specification
1	IF	LAGMA	-		-2.6	-		+3000	-180		RNP APCH
2	TF	HH901	-	336 (338.2)	-2.6	5.0		+3000	-180		RNP APCH
3	TF	RW34R	Y	336 (338.2)	-2.6	9.2		-	-180	-3.0/50	RNP APCH
4	CF	HH902	Y	336 (338.2)	-2.6	-		-	-230		RNP APCH
5	TF	GOMBO	-	031 (033.5)	-2.6	13.9	R	-	-230		RNP APCH
6	TF	GENOT	-	146 (148.3)	-2.6	11.1		@4000	-230		RNP APCH
7	HM	GENOT	Y	066 (068.3)	-2.6	4.3	R	@4000	-230		RNP APCH

WAYPOINT LIST

RNP RWY 34R

Waypoint Identifier	Coordinates
DANIK	245948.49N 0513712.89E
EMUNA	245712.86N 0514455.31E
MUXED	250356.10N 0514832.78E
LAGMA	250204.62N 0514325.78E
HH901	250644.17N 0514123.09E
RW34R	251519.65N 0513736.41E
HH902	251807.32N 0513622.55E
GOMBO	252944.22N 0514450.16E
GENOT	252018.11N 0515114.66E