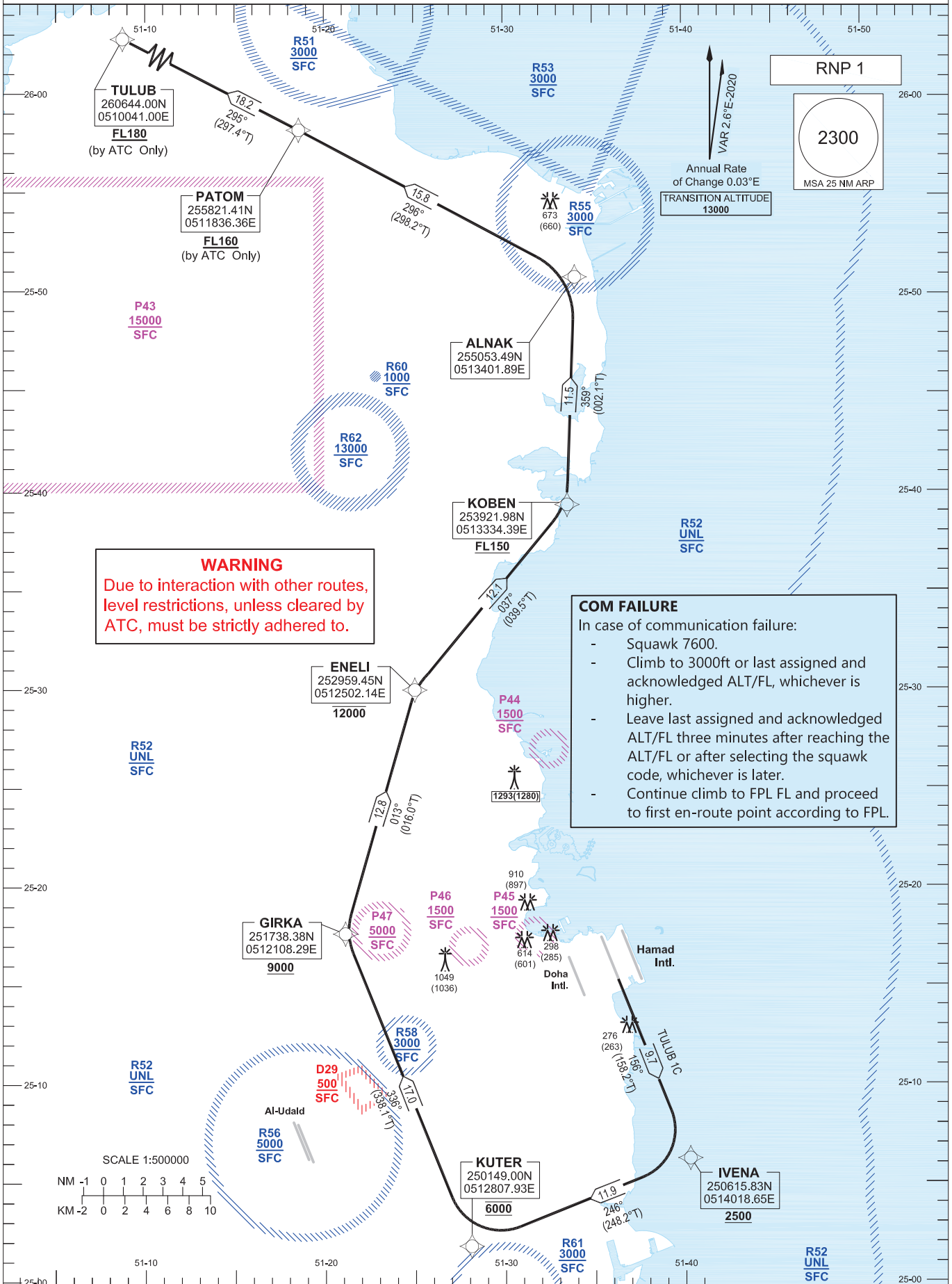


**STANDARD DEPARTURE
CHART - INSTRUMENT
(SID) - ICAO**

DIST IN NM
BEARINGS ARE MAGNETIC
ALTITUDES AND ELEV IN FEET

DOHA RADAR NORTH	121.10 / 121.625
DOHA RADAR SOUTH	120.675 / 119.15
DOHA APP WEST	119.725 / 125.125
HAMAD TWR WEST	118.025 / 118.225

**DOHA/Hamad Intl. (OTHH)
RNP RWY 16R
TULUB 1C**



WARNING
Due to interaction with other routes,
level restrictions, unless cleared by
ATC, must be strictly adhered to.

COM FAILURE
In case of communication failure:
- Squawk 7600.
- Climb to 3000ft or last assigned and
acknowledged ALT/FL, whichever is
higher.
- Leave last assigned and acknowledged
ALT/FL three minutes after reaching the
ALT/FL or after selecting the squawk
code, whichever is later.
- Continue climb to FPL FL and proceed
to first en-route point according to FPL.

Route Designator	Routing
TULUB 1C	IVENA[T158.2;A2500+] - KUTER[A6000] -GIRKA[A9000+] -ENELI[A12000-] KOBEN[F150+] - ALNAK - PATOM[F160+] - TULUB[F180+]
PATOM at FL160 or above by ATC Only. TULUB at FL180 or above by ATC Only.	

Change: New procedure.