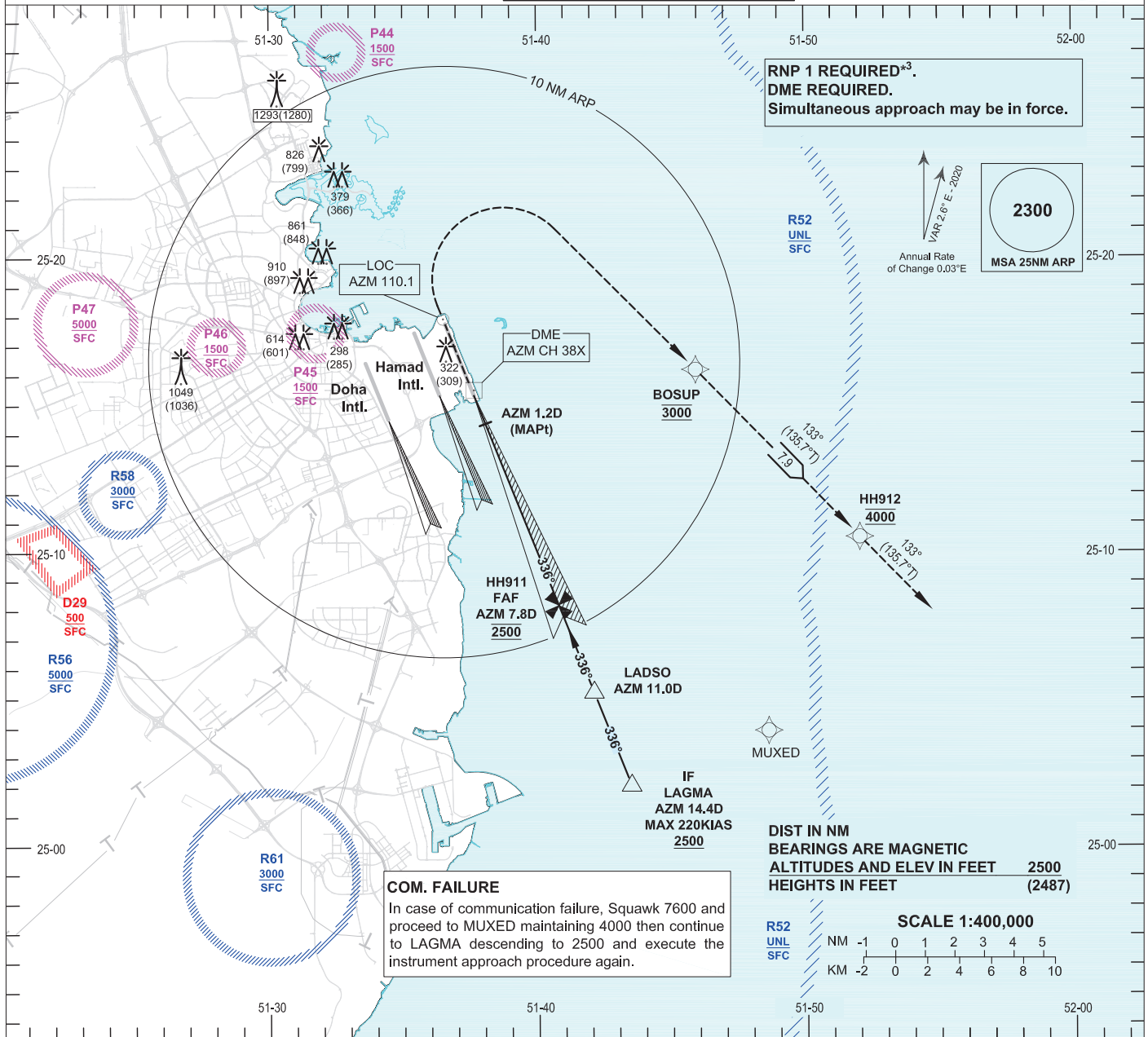


**INSTRUMENT
APPROACH
CHART - ICAO**

**AD ELEV 13
HEIGHTS RELATED TO
THR RWY 34R - ELEV 13**

DOHA RADAR NORTH	121.10 / 121.625
DOHA RADAR SOUTH	120.675 / 119.15
DOHA APP EAST	124.775 / 120.60
DOHA DIRECTOR EAST	119.40 / 121.125
HAMAD TWR EAST	118.525 / 118.225

**DOHA/Hamad Intl. (OTHH)
ILS RWY34R CAT II & III
ACFT CAT A B C D**



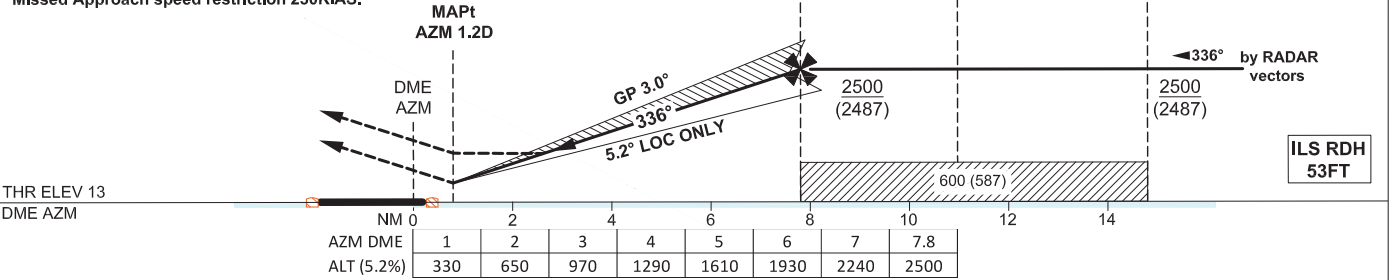
COM. FAILURE

In case of communication failure, Squawk 7600 and proceed to MUXED maintaining 4000 then continue to LAGMA descending to 2500 and execute the instrument approach procedure again.

TA 13000

Missed Approach

Climb straight ahead to 1000 then turn right direct to BOSUP climbing to 3000. After BOSUP continue climb to 4000 on track to HH912. Continue on track 133° maintaining 4000 and expect RADAR vectors. Missed Approach speed restriction 230KIAS.



OCA (OCH)		A	B	C	D
Straight in Approach	ILS CAT I	186 (173)	199 (186)	215 (202)	230 (217)
	ILS CAT II	75 (62)	88 (75)	102 (89)	120 (107)
	LOC ONLY	340 (327)			
Circling		620 (607)		1310 (1297)	

1. AZM DME Zero Ranged to TDZ.

2. CAT IIIA and CAT IIIB Approved.

3. *RNP 1 required in the Missed Approach.

4. In case of Missed Approach inform ATC immediately.

LOC ONLY Approach: MAPt at IBD 0.8D

Speed	KT	80	100	120	140	160	180
	Time	MIN:SEC Timing Not Authorized					
RATE OF DESCENT	FT/MIN	420	530	640	740	850	960

Change: New procedure.