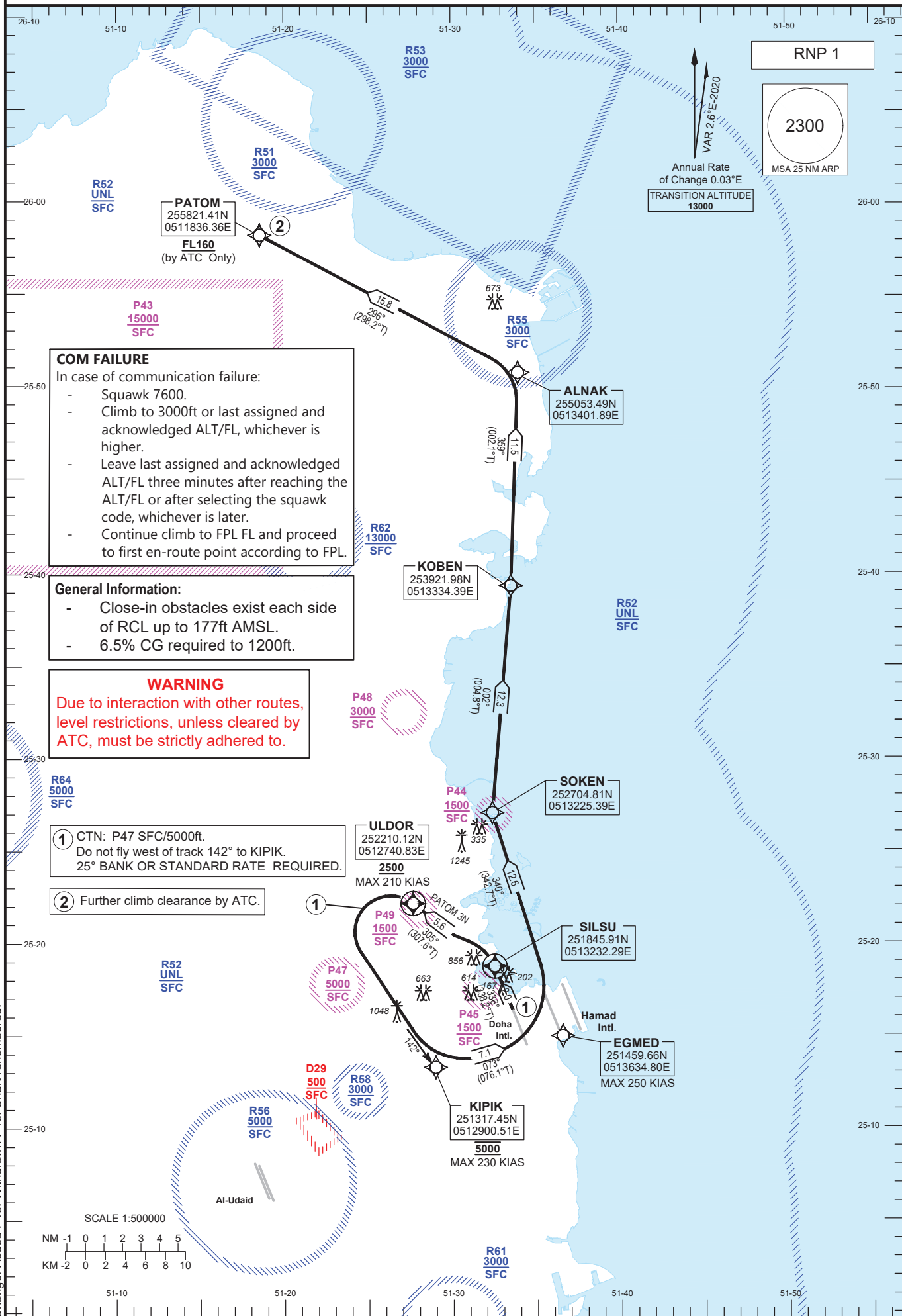


**STANDARD DEPARTURE
CHART - INSTRUMENT
(SID) - ICAO**

DIST IN NM
BEARINGS ARE MAGNETIC
ALTITUDES AND ELEV IN FEET

DOHA RADAR NORTH	121.100 / 121.625
DOHA APP WEST	119.725 / 125.125
DOHA TWR	118.900 / 119.025

**DOHA/Doha Intl. (OTBD)
RNP RWY 33
PATOM 3N**



COM FAILURE
In case of communication failure:

- Squawk 7600.
- Climb to 3000ft or last assigned and acknowledged ALT/FL, whichever is higher.
- Leave last assigned and acknowledged ALT/FL three minutes after reaching the ALT/FL or after selecting the squawk code, whichever is later.
- Continue climb to FPL FL and proceed to first en-route point according to FPL.

General Information:

- Close-in obstacles exist each side of RCL up to 177ft AMSL.
- 6.5% CG required to 1200ft.

WARNING
Due to interaction with other routes, level restrictions, unless cleared by ATC, must be strictly adhered to.

① CTN: P47 SFC/5000ft.
Do not fly west of track 142° to KIPK.
25° BANK OR STANDARD RATE REQUIRED.

② Further climb clearance by ATC.

Change: Added P49. Withdrawn P46. Chart renumbered.