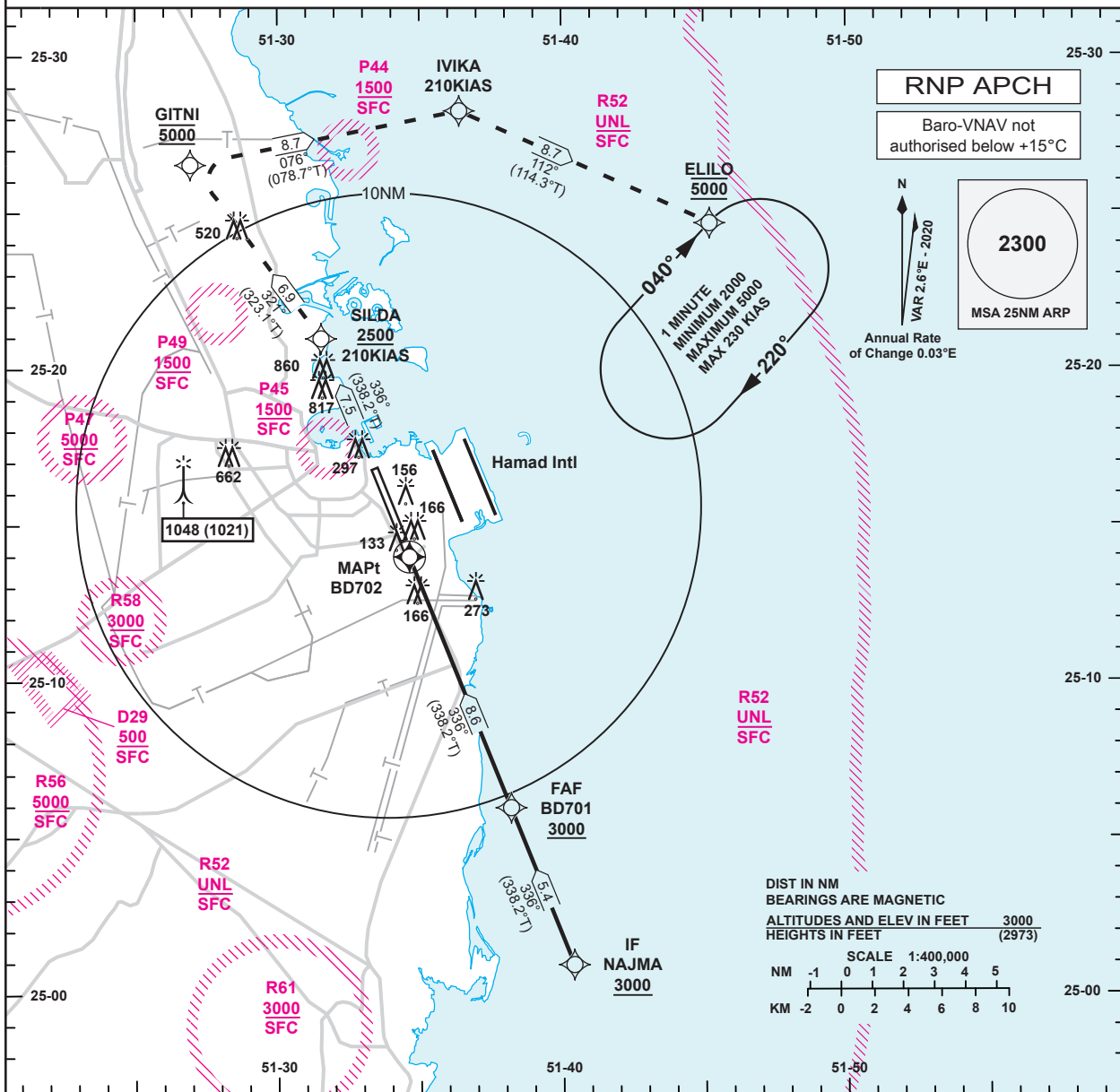


**INSTRUMENT APPROACH CHART - ICAO** AD ELEV 37  
HEIGHTS RELATED TO THR RWY 33 - ELEV 27

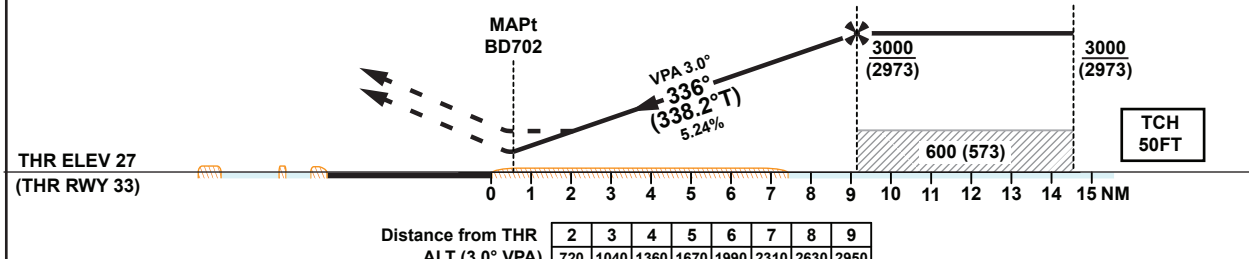
DOHA RADAR NORTH	121.10 / 121.625	DOHA DIRECTOR WEST	123.875 / 119.225
DOHA RADAR SOUTH	120.675 / 119.15	DOHA DIRECTOR	124.05 / 121.775
DOHA APP EAST	124.775 / 120.60	DOHA TWR	118.90 / 119.025
DOHA APP WEST	119.725 / 125.125		

**DOHA/Doha Intl. (OTBD) RNP RWY 33**  
ALL ACFT CATEGORIES



TA 13000

**Missed Approach**  
Climb straight ahead to SILDA, at or above 2500.  
At SILDA turn left to GITNI, at 5000. At GITNI turn right to IVIKA, at IVIKA turn right to ELILO and hold.  
Missed Approach speed restriction 210KIAS until ELILO.



OCA (OCH)		A	B	C	D	E
Straight in Approach	LNAV/VNAV	390 (363)				
	LNAV	420 (393)				
Circling		720 (683)	910 (873)	1310 (1273)	1550 (1513)	

1. Hold at ELILO protected for Sector 3 Entry only.  
2. 5.8% CG required to SILDA.

Approach: MAPt at BD702		80	100	120	140	160	180
Speed	KT						
Time	MIN:SEC	Timing Not Authorized					
Rate of descent	FT/MIN	420	530	630	740	840	950

Changes: Added P49. Withdrawn P46. Chart renumbered.